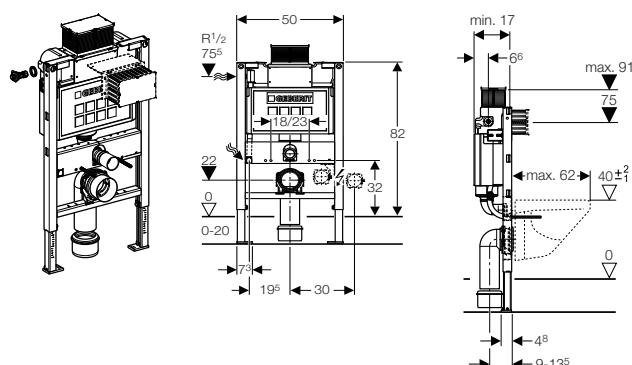


Self-supporting mounting frame



	Element height	Description	
Element for WC	82, 98 cm	• front or top actuation, for actuator plates Kappa20, Kappa50	→ Page 21
		• front actuation, for Geberit design actuator plates	→ Page 20
	112 cm	• front actuation, for corner installation, for Geberit design actuator plates	→ Page 22
		• front actuation, for Geberit standard actuator plates	→ Page 23
		• front actuation, telescopic, for Geberit design actuator plates	→ Page 22
		• front actuation, thickness 8 cm, for Geberit design actuator plates	→ Page 20
	without cistern	• Duofix mounting element	→ Page 23
Element for bidet	82, 98 cm		→ Page 24
	112 cm		→ Page 25
Element for washbasin	98/82 cm		→ Page 26
	112 cm		→ Page 27
	112 cm	• for concealed wall-mounted tap	→ Page 25
Element for urinal	112 cm	• for type Keramag, Joly and Visit	→ Page 28
	112 - 130 cm	• for type Universal	→ Page 27
		• for type Universal, hidden	→ Page 29
		• for exposed flush valve	→ Page 28
Accessories		• fastening sets	→ Page 29
		• support for small ceramics	→ Page 31
		• installation set for electrical connection	→ Page 31
		• sound insulation	→ Page 31
		• rubber collar	→ Page 31
		• tap connection	→ Page 31

Duofix element with UP200, front or top actuation, height 82 cm



Application Purpose

- For wall-hung WC with fastening distance 18 cm or 23 cm
- For installation in front of or inside a solid wall
- For installation in front of a solid or drywall
- For installation in drywall or preWall construction covered with panels (gypsum or wood)
- For installation in room-height preWall or partition wall
- For a floor construction of 0 - 20 cm

Characteristics

- Element height 82 cm
- Dual flush with actuator plate Kappa20 or Kappa50
- Adjustable flushing volume
- Water supply connection left
- Fastening for outlet bend sound-absorbing
- Connection hose to angle stop valve can be screw-connected by hand
- Holes dia. 9 mm for fastening in wood frame construction
- Concealed cistern fully insulated against condensation
- Protection cover for service opening, can be cut to length
- Self-supporting
- Powder-coated, colour Geberit blue
- Galvanized leg supports, adjustable from 0 - 20 cm, with detent mark
- Self-locking feet for tool-free alignment of the element
- Rotating foot plate

Product Details

Factory setting	6 and 3 l
Flush range small	3 - 4 l
Flush range large	6 / 9 l

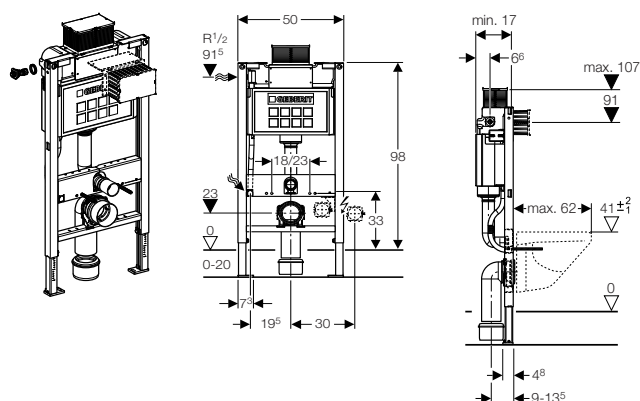
Scope Of Delivery

- Water supply connection R 1/2" with integrated angle stop valve
- Geberit AquaClean conduit pipe
- Protection cover for service opening, can be cut to length
- 2 threaded rods M12 for ceramics fastening
- WC connection set, dia. 90 mm
- WC outlet bend, HDPE, dia. 90 mm
- Adapter sleeve, dia. 90/110 mm
- Protection plug
- Fastening material
- Excluded: Actuator plate

Ordering Information

Article no.	Description
111.240.00.1	Duofix element with UP200, front or top actuation, height 82 cm

Duofix element with UP200, front or top actuation, height 98 cm



Application Purpose

- For wall-hung WC with fastening distance 18 cm or 23 cm
- For installation in front of or inside a solid wall
- For installation in front of a solid or drywall
- For installation in drywall or preWall construction covered with panels (gypsum or wood)
- For installation in room-height preWall or partition wall
- For a floor construction of 0 - 20 cm

Characteristics

- Element height 98 cm
- Dual flush with actuator plate Kappa20 or Kappa50
- Adjustable flushing volume
- Water supply connection left
- Fastening for outlet bend sound-absorbing
- Connection hose to angle stop valve can be screw-connected by hand
- Holes dia. 9 mm for fastening in wood frame construction
- Concealed cistern fully insulated against condensation
- Protection cover for service opening, can be cut to length
- Self-supporting
- Powder-coated, colour Geberit blue
- Galvanized leg supports, adjustable from 0 - 20 cm, with detent mark
- Self-locking feet for tool-free alignment of the element
- Rotating foot plate

Product Details

Factory setting	6 and 3 l
Flush range small	3 - 4 l
Flush range large	6 / 9 l

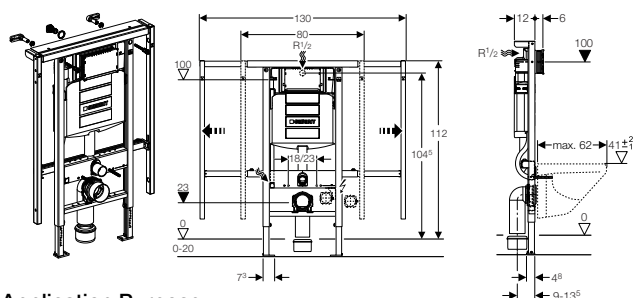
Scope Of Delivery

- Water supply connection R 1/2" with integrated angle stop valve
- Geberit AquaClean conduit pipe
- Protection cover for service opening, can be cut to length
- 2 threaded rods M12 for ceramics fastening
- WC connection set, dia. 90 mm
- WC outlet bend, HDPE, dia. 90 mm
- Adapter sleeve, dia. 90/110 mm
- Protection plug
- Fastening material
- Excluded: Actuator plate

Ordering Information

Article no.	Description
111.290.00.1	Duofix element with UP200, front or top actuation, height 98 cm

Duofix Special element with UP320, front operated, width-adjustable



Application Purpose

- For side fastening on room-height solid wall
- For building a part-height preWall construction in front of solid or drywall
- Suitable for mounting without rear wall fastening
- Suitable for installation in UW profile 50 and UW profile 75
- For wall-hung WC with fastening distance 18 cm or 23 cm
- For installation in niches
- For lateral fastening to room-height dry wall

Characteristics

- Integrated panelling support
- Variable element width, 80 - 130 cm
- Adjustable side profiles
- Four-point fastening to the building structure
- Dual flush with Sigma50, Sigma20, Samba or Bolero actuator plate
- Single flush with Sigma10 actuator plate
- Flush-stop with Rumba, Mambo or Tango actuator plate
- Adjustable flushing volume
- Concealed cistern for tool-free mounting and repair work
- Concealed cistern fully insulated against condensation
- Self-supporting
- Powder-coated, colour Geberit blue
- Tool-free fastening for outlet bend, sound-absorbing, adjustable in depth with 8 positions, adjustable range 45 mm
- Self-locking feet for tool-free alignment of the element
- Galvanized leg supports, adjustable from 0 - 20 cm, with detent mark
- Rotating foot plate
- Water supply connection at centre back or at the top

Product Details

Factory setting	6 and 3 l
Flush range small	3 - 4 l
Flush range large	6 / 7.5 l
Interruptible flush-stop	6 / 7.5 l

Scope Of Delivery

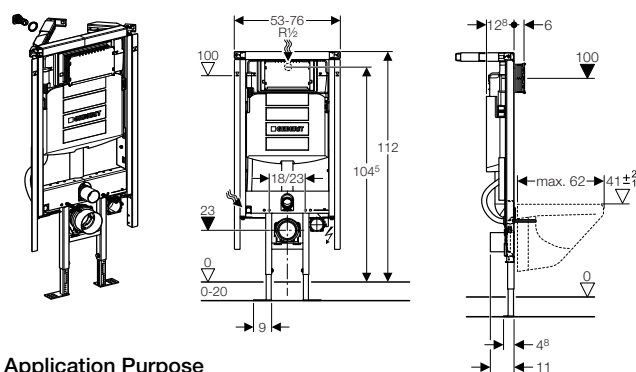
- Water supply connection R 1/2" with integrated angle stop valve and hand wheel
- Protection plug
- Protection cover for service opening, can be cut to length
- Flush bend
- Geberit AquaClean conduit pipe
- 2 threaded rods M12 for ceramics fastening
- WC connection set, dia. 90 mm
- WC outlet bend, HDPE, dia. 90 mm
- Adapter sleeve, dia. 90/110 mm
- Rear wall fastening
- Panelling sheet for part-height shelf
- Fastening material
- Excluded: Actuator plate

Ordering Information

Article no.	Description
111.385.00.5	Duofix special element with UP320, front actuation, width-adjustable

Duofix mounting elements for corner installation

Duofix special element with UP320, front actuation, corner installation



Application Purpose

- For free-standing installation with wall end profile
- For installation as a corner element in front of drywall, solid wall or GIS wall construction
- For installation in front of or inside a solid wall
- For a floor construction of 0 - 20 cm

Characteristics

- Dual flush with Sigma50, Sigma20, Samba or Bolero actuator plate
- Single flush with Sigma10 actuator plate
- Flush-stop with Rumba, Mambo or Tango actuator plate
- Adjustable flushing volume
- Concealed cistern for tool-free mounting and repair work
- Concealed cistern fully insulated against condensation
- Telescopic profiles to fasten to the wall and for fastening panelling supports
- Wall fixture variable from 30° to 60°
- Leg supports not on the perimeter to allow for lateral offset of the drainage pipe
- Variable element depth
- Self-supporting
- Powder-coated, colour Geberit blue
- Rotating foot plate
- Water supply connection at centre back or at the top

Product Details

Factory setting	6 and 3 l
Flush range small	3 - 4 l
Flush range large	6 / 7.5 l
Interruptible flush-stop	6 / 7.5 l

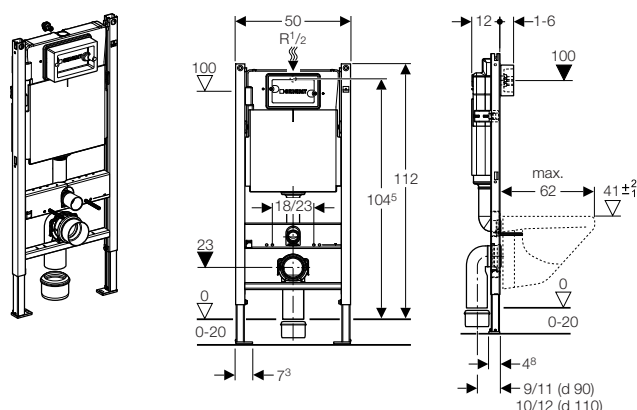
Scope Of Delivery

- Water supply connection R 1/2" with integrated angle stop valve and hand wheel
- Flush bend
- Geberit AquaClean conduit pipe
- Protection plug
- Installation kit for electrical connection
- Protection cover for service opening, can be cut to length
- 2 threaded rods M12 for ceramics fastening
- WC outlet pipe, HDPE, dia. 90 mm
- Adapter sleeve, dia. 90/110 mm
- WC connection set, dia. 90 mm
- Fastening material
- Excluded: Actuator plate

Ordering Information

Article no.	Description
111.390.00.5	Duofix special element with UP320, front actuation, corner installation

Duofix element with UP182, front actuation new



Application Purpose

- For front actuation
- For installation in part-height or room-height drywall construction in front of a solid or drywall construction
- For wall-hung WC with fastening distance 18 cm or 23 cm
- For a floor construction of 0 - 20 cm

Characteristics

- Installation depth 12 cm
- Self-supporting
- Galvanized leg supports, adjustable from 0 - 20 cm, with detent mark
- Powder-coated, colour Geberit blue
- Dual flush with Delta50 or Delta21 actuator plate
- Flush-stop or single flush with Delta40 or Delta11 actuator plate
- Concealed cistern fully insulated against condensation
- Immediate post flush possible with factory setting
- Holes dia. 9 mm for fastening in wood frame construction
- Foot plate plastic, depth suitable for mounting in UW50 profiles
- Adjustable flushing volume
- Water supply connection at centre back or at the top

Product Details

Factory setting	6 and 3 l
Flush range small	3 / 4 l
Flush range large	6 / 9 l
Interruptible flush-stop	6 / 9 l

Scope Of Delivery

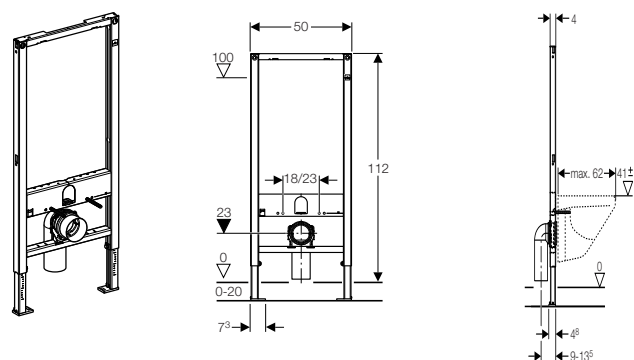
- Galvanized leg supports, adjustable, premounted
- 2 threaded rods M12 for ceramics fastening
- Protection cover for service opening, polystyrene foam
- Angle stop valve R 1/2" and plug adapter
- Outlet bend bracket
- Connector set ø 90 mm
- WC outlet bend, PE-HD, ø 90/90 mm
- Adapter sleeve, dia. 90/110 mm
- Two protection plugs
- Fastening material
- Excluded: Actuator plate

Ordering Information

Article no.	Description
458.160.00.1	Duofix element with UP182, front actuation

Duofix mounting elements for wall-hung WC, without concealed cistern

Duofix element without cistern, height 112 cm



Application Purpose

- For installation in drywall or preWall construction covered with panels (gypsum or wood)
- For wall-hung WC with fastening distance 18 cm or 23 cm
- For a floor construction of 0 - 20 cm

Characteristics

- Element height 112 cm
- Self-supporting
- Galvanized leg supports, adjustable from 0 - 20 cm, with detent mark
- Rotating foot plate
- Powder-coated, colour Geberit blue

Scope Of Delivery

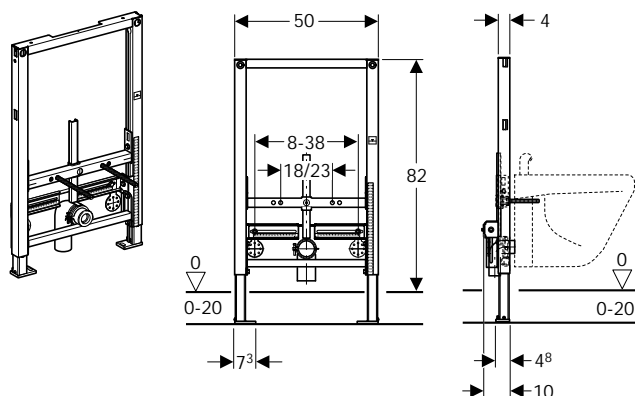
- 2 threaded rods M12 for ceramics fastening
- WC connection set, dia. 90 mm
- WC outlet bend, HDPE, dia. 90 mm
- Fastening material
- Excluded: Concealed cistern
- Excluded: Actuator plate

Ordering Information

Article no.	Description
111.321.00.1	Duofix element without cistern, height 112 cm

Duofix mounting elements for bidet

Duofix element for bidet, height 82 cm



Application Purpose

- For installation in drywall or preWall construction covered with panels (gypsum or wood)
- For a floor construction of 0 - 20 cm

Characteristics

- Element height 82 cm
- Bidet fastening distance 18 cm or 23 cm
- Self-supporting
- Powder-coated, colour Geberit blue
- Galvanized leg supports, adjustable from 0 - 20 cm, with detent mark
- Rotating foot plate
- Holes dia. 9 mm for fastening in wood frame construction
- Self-locking feet for tool-free alignment of the element

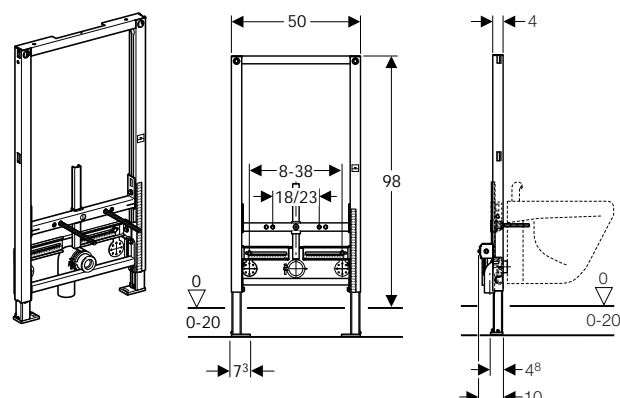
Scope Of Delivery

- 2 threaded rods M12 for ceramics fastening
- Outlet bend dia. 50 mm
- Rubber collar dia. 44/32 mm
- Fastening material
- Excluded: Water supply connections

Ordering Information

Article no.	Description
111.524.00.1	Duofix element for bidet, height 82 cm

Duofix element for bidet, height 98 cm



Application Purpose

- For installation in drywall or preWall construction covered with panels (gypsum or wood)
- For a floor construction of 0 - 20 cm

Characteristics

- Element height 98 cm
- Bidet fastening distance 18 cm or 23 cm
- Self-supporting
- Powder-coated, colour Geberit blue
- Galvanized leg supports, adjustable from 0 - 20 cm, with detent mark
- Holes dia. 9 mm for fastening in wood frame construction
- Self-locking feet for tool-free alignment of the element
- Rotating foot plate

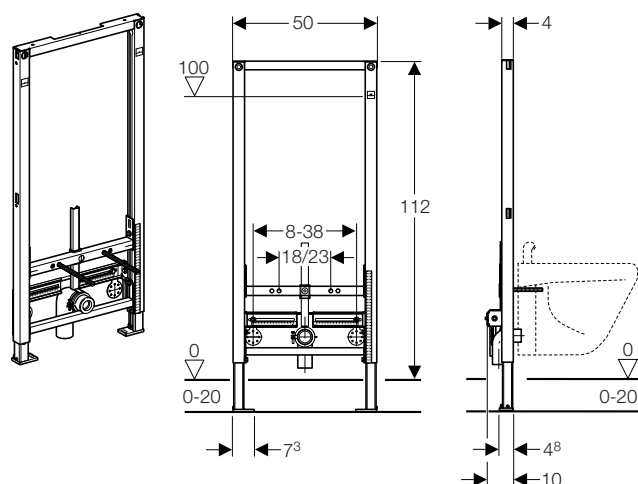
Scope Of Delivery

- 2 threaded rods M12 for ceramics fastening
- Outlet bend dia. 50 mm
- Rubber collar dia. 44/32 mm
- Fastening material
- Excluded: Water supply connections

Ordering Information

Article no.	Description
111.539.00.1	Duofix element for bidet, height 98 cm

Duofix element for bidet, height 112 cm



Application Purpose

- For installation in drywall or preWall construction covered with panels (gypsum or wood)
- For a floor construction of 0 - 20 cm

Characteristics

- Element height 112 cm
- Bidet fastening distance 18 cm or 23 cm
- Self-supporting
- Powder-coated, colour Geberit blue
- Galvanized leg supports, adjustable from 0 - 20 cm, with detent mark
- Rotating foot plate
- Holes dia. 9 mm for fastening in wood frame construction
- Self-locking feet for tool-free alignment of the element

Scope Of Delivery

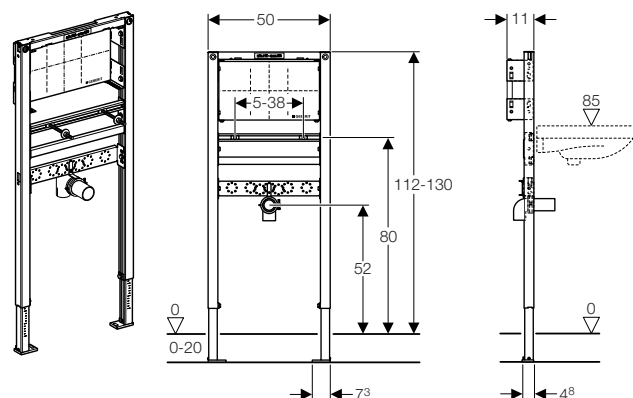
- 2 threaded rods M12 for ceramics fastening
- Outlet bend dia. 50 mm
- Rubber collar dia. 44/32 mm
- Fastening material
- Excluded: Water supply connections

Ordering Information

Article no.	Description
111.520.00.1	Duofix element for bidet, height 112 cm

Duofix mounting elements for washbasin

Duofix washbasin for concealed wall-mounted tap



Application Purpose

- For installation in front of a solid or drywall
- For installation in drywall or preWall construction covered with panels (gypsum or wood)
- For installation in room-height preWall or partition wall
- For installation in front of or inside a solid wall
- For a floor construction of 0 - 20 cm

Characteristics

- Element height 112 cm to 130 cm
- Holes dia. 9 mm for fastening in wood frame construction
- Washbasin fastening distance 5 - 38 cm
- Galvanized leg supports, adjustable from 0 - 20 cm, with detent mark
- Self-supporting
- Powder-coated, colour Geberit blue
- Rotating foot plate
- Fastening for outlet bend, adjustable height
- Fastening plate for concealed fittings, veneered wood, waterproof bonded, adjustable in height and depth
- Self-locking feet for tool-free alignment of the element

Scope Of Delivery

- Outlet bend dia. 50 mm
- Rubber collar dia. 44/32 mm
- 2 threaded rods M10 for ceramics fastening
- Fastening material

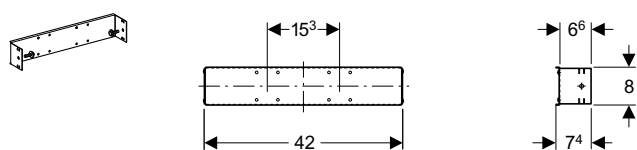
Ordering Information

Article no.	Description
111.493.00.1	Duofix washbasin for concealed wall-mounted tap

Note

- For concealed base unit, article no. 616.030.00.1, page 112.
- For concealed wall mounted tap HyTronic87 and HyTronic88.

Duofix crossbar for concealed stop valves



Application Purpose

- For installation in room-height preWall or partition wall
- For installation in Duofix installation element
- For GIS concealed shut-off valve

Characteristics

- Galvanized

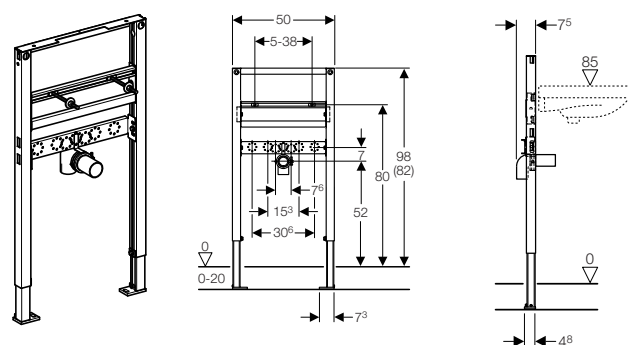
Scope Of Delivery

- Fastening material

Ordering Information

Article no.	Description
111.807.00.1	Duofix crossbar for concealed stop valves

Duofix element for washbasin, height 98/82 cm



Application Purpose

- For installation in front of a solid or drywall
- For installation in drywall or preWall construction covered with panels (gypsum or wood)
- For a floor construction of 0 - 20 cm
- For washbasin with upright tap unit

Characteristics

- Element height 98/82 cm
- Holes dia. 9 mm for fastening in wood frame construction
- Self-supporting
- Powder-coated, colour Geberit blue
- Galvanized leg supports, adjustable from 0 - 20 cm, with detent mark
- For structures on the floor, leg supports withdrawable to -5 cm
- Rotating foot plate
- Tap connection plate with adjustable height and depth
- Fastening for outlet bend, adjustable height
- Self-locking feet for tool-free alignment of the element

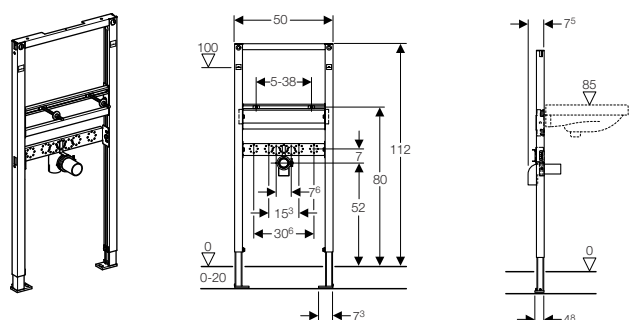
Scope Of Delivery

- Outlet bend dia. 50 mm
- Rubber collar dia. 44/32 mm
- 2 threaded rods M10 for ceramics fastening
- Fastening material
- Excluded: Water supply connections

Ordering Information

Article no.	Description
111.490.00.1	Duofix element for washbasin, height 98/82 cm

Duofix element for washbasin, height 112 cm



Application Purpose

- For installation in drywall or preWall construction covered with panels (gypsum or wood)
- For a floor construction of 0 - 20 cm
- For washbasin with upright tap unit

Characteristics

- Element height 112 cm
- Fastening for outlet bend, adjustable height
- Tap connection plate with adjustable height and depth
- Self-supporting
- Powder-coated, colour Geberit blue
- Galvanized leg supports, adjustable from 0 - 20 cm, with detent mark
- Rotating foot plate
- Holes dia. 9 mm for fastening in wood frame construction
- Self-locking feet for tool-free alignment of the element

Scope Of Delivery

- 2 threaded rods M10 for ceramics fastening
- Outlet bend dia. 50 mm
- Rubber collar dia. 44/32 mm
- Fastening material
- Excluded: Water supply connections

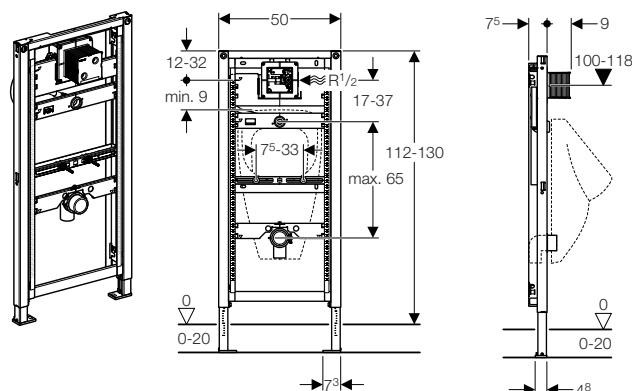
Ordering Information

Article no.	Description
111.434.00.1	Duofix element for washbasin, height 112 cm

Duofix mounting elements for urinal

Duofix element for urinal Universal

new



Application Purpose

- For installation in room-height preWall or partition wall
- For installation in front of a solid or drywall
- For installing urinals
- For installation in drywall or preWall construction covered with panels (gypsum or wood)
- For a floor construction of 0 - 20 cm
- For accommodating the HyTronic urinal controls IR or HyTouch urinal controls pneumatic with plate size 13 x 13 cm

Characteristics

- Element height 112 cm, adjustable up to 130 cm
- Holes dia. 9 mm for fastening in wood frame construction
- Galvanized leg supports, adjustable from 0 - 20 cm, with detent mark
- Self-supporting
- Powder-coated, colour Geberit blue
- For structures on the floor, leg supports withdrawable to -5 cm
- Rotating foot plate
- Water supply connection 1/2"
- Water supply connection can be installed without tools
- Stop valve with throttle pre-mounted
- Pre-mounted conduit pipe for rinsing the pipe
- Protection cover for service opening, can be cut to length
- Flexible flush connection to inlet
- Fastening for flush pipe dia. 32 mm, height-adjustable
- Fastening for ceramic appliances, adjustable height and distance
- Fastening for outlet bend sound absorbing and height-adjustable
- Self-locking feet for tool-free alignment of the element
- Additional fastening possible for urinal with accessories
- Conversion possible for urinals with spray head with accessories

Product Details

Flow rate at 1 bar	0.3 l/s
Test pressure water	16 bar
Pressure range during operation	1 - 8 bar

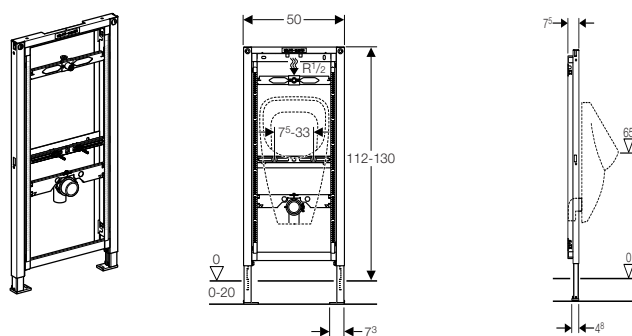
Scope Of Delivery

- Concealed housing with water section
- Protection box with cover
- Water supply connection R 1/2"
- Connection pipe between inlet ø 32 mm and urinal, incl. seal on urinal
- Suction trap ø 50 mm, incl. seal on urinal
- Outlet bend reduced ø 63/57 mm to ø 50/44 mm, incl. seal on suction trap
- 2 threaded rods M8 for urinal fastening
- Fastening material
- Excluded: Urinal flushing system

Ordering Information

Article no.	Description
111.616.00.1	Duofix element for urinal Universal

Duofix element for urinal for exposed flush valve, type Universal



Application Purpose

- For installation in room-height preWall or partition wall
- For installation in drywall or preWall construction covered with panels (gypsum or wood)
- For installation in front of a solid or drywall
- For installation in front of or inside a solid wall
- For installing urinals
- For a floor construction of 0 - 20 cm
- For exposed flush valve

Characteristics

- Holes dia. 9 mm for fastening in wood frame construction
- Self-supporting
- Galvanized leg supports, adjustable from 0 - 20 cm, with detent mark
- Rotating foot plate
- For structures on the floor, leg supports withdrawable to -5 cm
- Powder-coated, colour Geberit blue
- Element height 112 cm, adjustable up to 130 cm
- Fastening for ceramic appliances, adjustable height and distance
- Fastening for outlet bend sound absorbing and height-adjustable
- Fastening for flush pipe Rp 1/2" height and sides adjustable
- Self-locking feet for tool-free alignment of the element

Scope Of Delivery

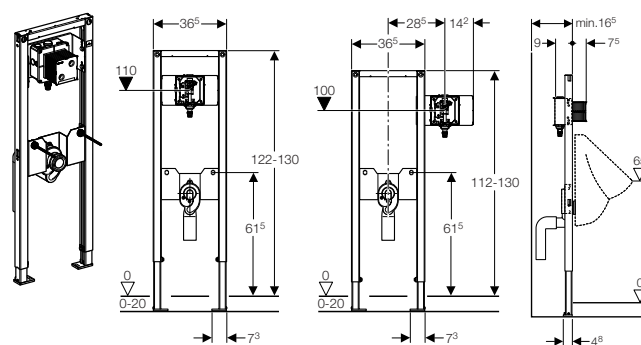
- Water supply connection R 1/2"
- Connection set for urinal with trap
- Rubber collar dia. 44/32 mm
- Outlet bend reduced \varnothing 63/57 mm to \varnothing 50/44 mm, incl. seal on suction trap
- Rubber collar dia. 57/50 mm
- 2 threaded rods M8 for ceramics fastening
- Fastening material
- Excluded: Urinal flushing system

Ordering Information

Article no.	Description
111.686.00.1	Duofix element for urinal for exposed flush valve, type Universal

Duofix element for urinal type Keramag Joly and Visit

new



Application Purpose

- For installation in room-height preWall or partition wall
- For installation in front of a solid or drywall
- For installing urinals
- For installation in drywall or preWall construction covered with panels (gypsum or wood)
- For a floor construction of 0 - 20 cm
- For semi-recessed urinals Keramag Joly and Keramag Visit
- For accommodating the HyTronic urinal controls IR or HyTouch urinal controls pneumatic with plate size 13 x 13 cm

Characteristics

- Element height 112 cm
- Holes dia. 9 mm for fastening in wood frame construction
- Galvanized leg supports, adjustable from 0 - 20 cm, with detent mark
- Self-supporting
- Powder-coated, colour Geberit blue
- For structures on the floor, leg supports withdrawable to -5 cm
- Rotating foot plate
- Water supply connection 1/2"
- Water supply connection can be installed without tools
- Stop valve with throttle pre-mounted
- Pre-mounted conduit pipe for rinsing the pipe
- Protection cover for service opening, can be cut to length
- Self-locking feet for tool-free alignment of the element

Product Details

Flow rate at 1 bar	0.3 l/s
Test pressure water	16 bar
Pressure range during operation	1 - 8 bar

Scope Of Delivery

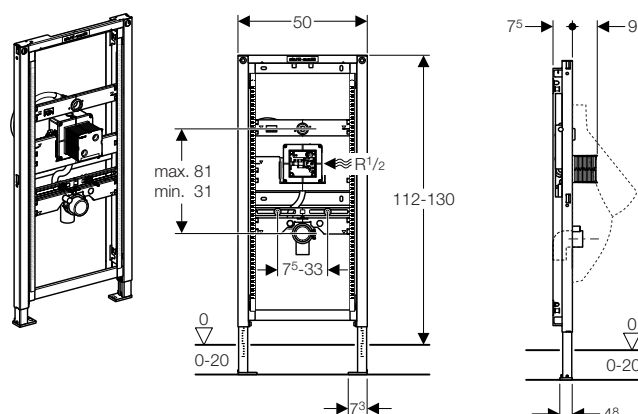
- Concealed housing with water section
- Protection box with cover
- Water supply connection R 1/2"
- Suction trap \varnothing 50 mm, incl. seal on urinal
- Outlet bend reduced \varnothing 63/57 mm to \varnothing 50/44 mm, incl. seal on suction trap
- 2 threaded rods M8 for urinal fastening
- 2 cut-out templates
- Fastening material
- Excluded: Urinal flushing system
- Excluded: Connection hose between installation set and urinal

Ordering Information

Article no.	Description
111.618.00.1	Duofix element for urinal type Keramag Joly and Visit

Connection hose between installation set and urinal available at Keramag, modell no. 521225

Duofix element for urinal Universal hidden new



Application Purpose

- For accommodating the hidden urinal control
- For installation in room-height preWall or partition wall
- For installation in front of a solid or drywall
- For installation in drywall or preWall construction covered with panels (gypsum or wood)
- For installing urinals
- For a floor construction of 0 - 20 cm

Characteristics

- Fastening for ceramic appliances, adjustable height and distance
- Fastening for outlet bend sound absorbing and height-adjustable
- Water connection height-adjustable
- Water supply connection 1/2"
- Holes dia. 9 mm for fastening in wood frame construction
- Galvanized leg supports, adjustable from 0 - 20 cm, with detent mark
- Self-supporting
- Powder-coated, colour Geberit blue
- For structures on the floor, leg supports withdrawable to -5 cm
- Rotating foot plate
- Element height 112 cm, adjustable up to 130 cm
- Water supply connection can be installed without tools
- Stop valve with throttle pre-mounted
- Protection cover for service opening, can be cut to length
- Flexible flush connection to inlet
- Fastening for flush pipe dia. 32 mm, height-adjustable
- Self-locking feet for tool-free alignment of the element
- Pre-mounted conduit pipe for rinsing the pipe
- Additional fastening possible for urinal with accessories
- Conversion possible for urinals with spray head with accessories

Product Details

Flow rate at 1 bar	0.3 l/s
Test pressure water	16 bar
Pressure range during operation	1 - 8 bar

Scope Of Delivery

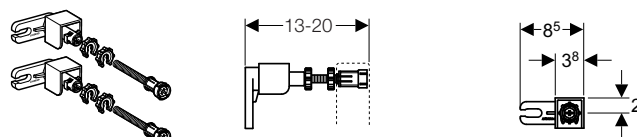
- Concealed housing with water section
- Protection box with cover
- Connection pipe between inlet \varnothing 32 mm and urinal, incl. seal on urinal
- 2 threaded rods M8 for urinal fastening
- Outlet bend PE-HD reduced \varnothing 63/57 mm to \varnothing 50/44 mm
- Fastening material
- Excluded: Urinal flushing system

Ordering Information

Article no.	Description
111.689.00.1	Duofix element for urinal Universal, hidden

Duofix accessories

Duofix wall fastening set



Application Purpose

- For fastening Duofix installation elements in front of solid or drywall construction

Characteristics

- Adjustable depth, 13 - 20 cm

Product Details

Product material	Zinc diecasting
------------------	-----------------

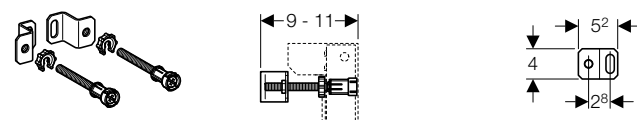
Scope Of Delivery

- 2 Wall anchorings
- 2 M10 threaded rods with long nut
- 2 Panelling supports, push-in
- Fastening material

Ordering Information

Article no.	Description
111.815.00.1	Duofix wall fastening set

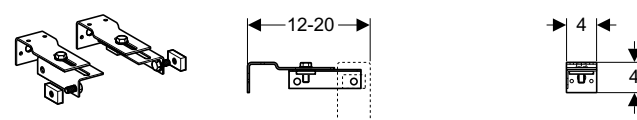
Duofix Special wall fastening set for WC element with UP700



Ordering Information

Article no.	Description
242.048.00.1	Duofix special fastening set for WC element with UP700

Duofix wall fastening set for UP182 new



Application Purpose

- For fastening Duofix WC element with UP182 on a solid or drywall construction

Characteristics

- Galvanized

Scope Of Delivery

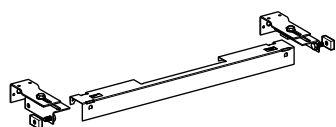
- Fastening material

Ordering Information

Article no.	Description
111.839.00.1	Duofix wall fastening set for UP182

Duofix preWall set for UP182

new



Application Purpose

- For fastening Duofix WC element with UP182 on a solid or drywall construction

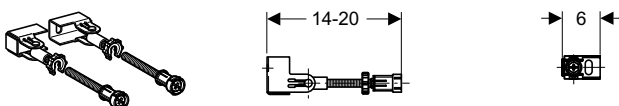
Scope Of Delivery

- Fastening material
- 2 Wall anchorings
- Crossbar for panelling support

Ordering Information

Article no.	Description
111.813.00.1	Duofix wall fastening set + crossbar for UP182

Duofix wall fastening set for corner installation



Application Purpose

- For universal fastening of Duofix installation elements to a solid or drywall construction

Characteristics

- Variable angle adaptation for corner installation
- Adjustable depth, 14 - 20 cm
- Galvanized

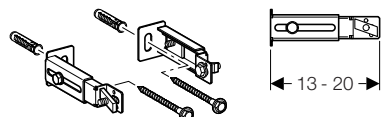
Scope Of Delivery

- 2 Wall anchorings
- 2 M10 threaded rods with long nut
- Fastening material
- Excluded: Panelling supports, push-in

Ordering Information

Article no.	Description
111.835.00.1	Duofix wall fastening set for corner installation

Duofix feet fixation to back wall



Application Purpose

- For alternative fastening of Duofix element feet to the rear wall

Characteristics

- Galvanized
- Adjustable depth, 13 - 20 cm

Product Details

Product material	Steel
------------------	-------

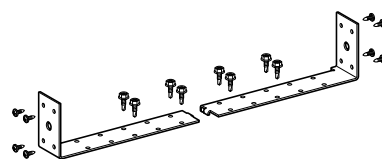
Scope Of Delivery

- Fastening material

Ordering Information

Article no.	Description
111.867.00.1	Duofix feet fixation to the back wall

Duofix extension angle brackets



Application Purpose

- For fastening Duofix elements between two studs with a distance of 50 - 65 cm

Characteristics

- Galvanized

Product Details

Product material	Steel
------------------	-------

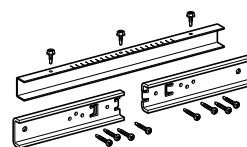
Scope Of Delivery

- Fastening material

Ordering Information

Article no.	Description
111.869.00.1	Duofix fixation between studs 50-65cm

Duofix support brackets for large washbasin



Application Purpose

- For fastening washbasins with a fastening distance larger than 38 cm to Duofix element for washbasin

Characteristics

- Fastening distance adjustable 38-58 cm
- Galvanized

Product Details

Product material	Steel
------------------	-------

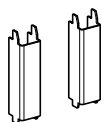
Scope Of Delivery

- Fastening material

Ordering Information

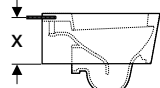
Article no.	Description
111.868.00.1	Duofix support brackets for large washbasin

Duofix support brackets for small ceramics WC



Application Purpose

- For additional support of WC ceramic appliances with contact surfaces smaller than 17 cm



- For WC elements GIS and Duofix

Characteristics

- U-profiles, galvanized

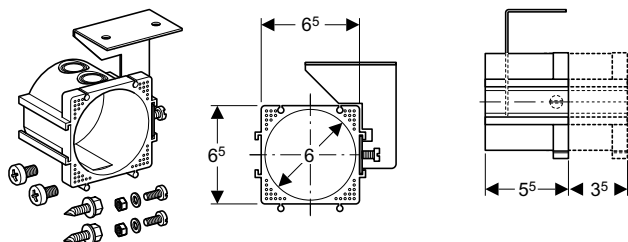
Product Details

Product material	Steel
------------------	-------

Ordering Information

Article no.	Description
111.847.00.1	Support brackets for small ceramics WC

Installation set for electrical connection



Application Purpose

- For positioning the electrical connection to the installation elements for a wall-hung WC
- For use with Kombifix, Duofix and GIS installation elements

Characteristics

- Adjustable depth

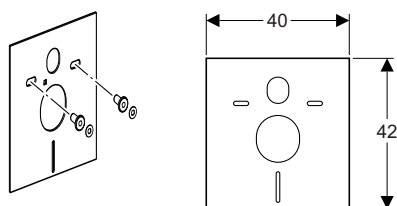
Scope Of Delivery

- Flush-mounted feeder box
- Fastening material

Ordering Information

Article no.	Description
242.001.00.1	Installation set for electrical connection

Sound insulation set



Application Purpose

- For wall-hung WC and wall-hung bidet

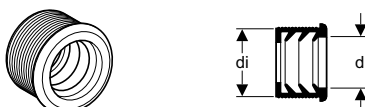
Product Details

Product material	Polystyrene foam
------------------	------------------

Ordering Information

Article no.	Description
156.050.00.1	Sound insulation set for wall-hung WC and bidet

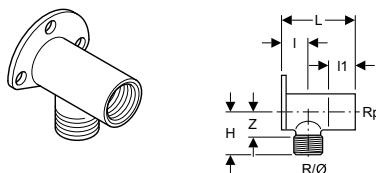
Rubber collar for traps



Ordering Information

Article no.	Description	dØ [mm]	diØ [mm]
152.682.00.1	Rubber collar for traps, dia. 50mm	32	44
152.689.00.1	Rubber collar for traps, dia. 56mm	32	50
152.690.00.1	Rubber collar for traps, dia. 56mm	40	50
152.691.00.1	Rubber collar for traps, dia. 63mm	32	57
152.692.00.1	Rubber collar for traps, dia. 63mm	40	57
152.693.00.1	Rubber collar for traps, dia. 63mm	50	57

Tap connection, with male thread, brass



Product Details

Product material	Brass
Angle	90°

Ordering Information

Article no.	dØ [mm]	R ["]	Rp ["]	H [cm]	L [cm]	I [cm]	I1 [cm]	Z [cm]
611.297.00.1	15	1/2	1/2	3	5,2	2	2,4	1,8

