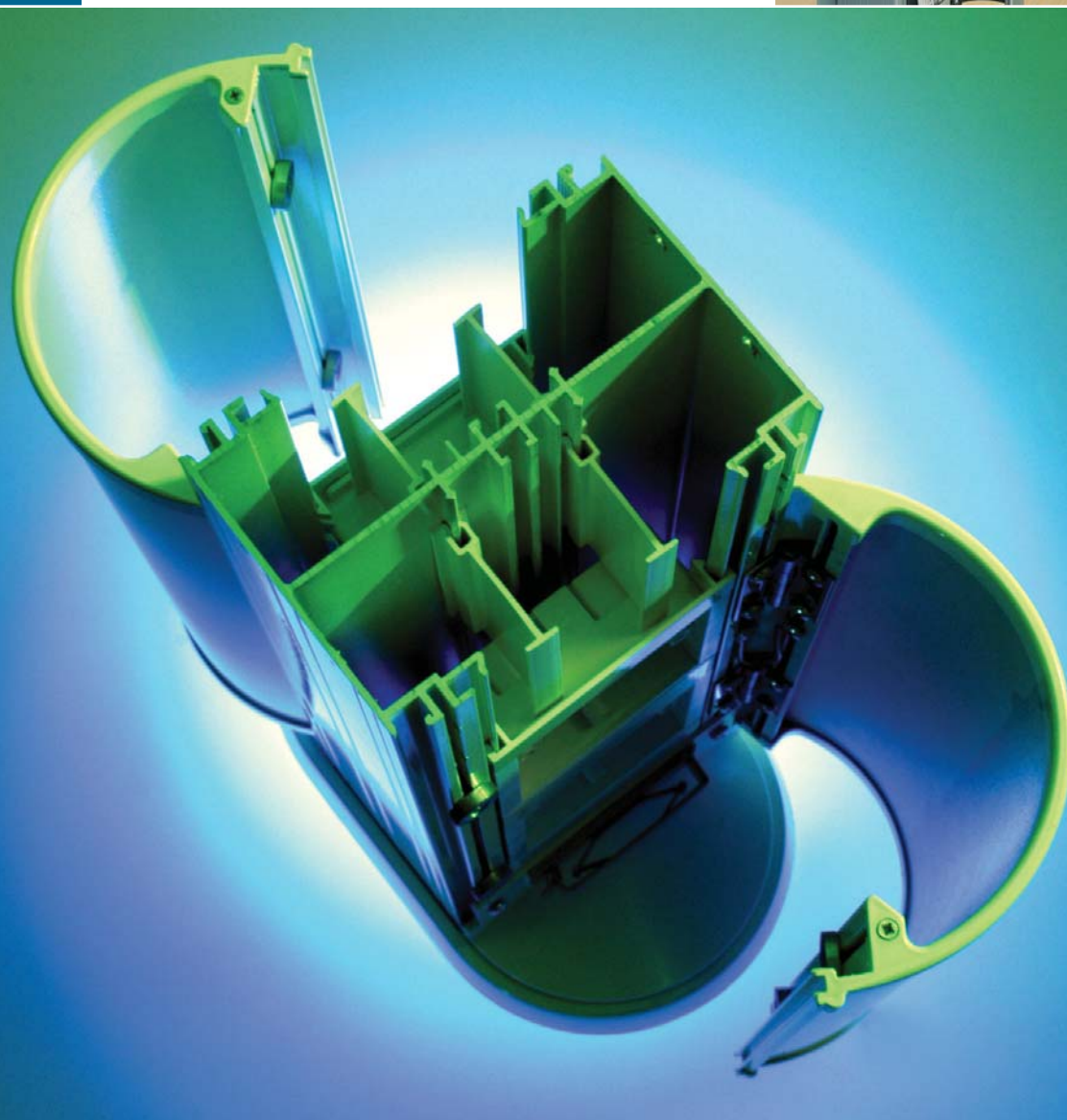


STERLING POWERPOLES AND POSTS

PowerPoles and PowerPosts are an elegant solution for the management of power, data and communication services to island work stations.

- Provide an efficient method of managing services at non-perimeter locations.
- Single and Double sided versions available.
- Sophisticated and elegant appearance suitable for the modern office environment.
- Hide a wealth of technology behind unobtrusive, flush fitting hinged lids.
- Silver anodised or white powder coat finish available to aluminium sections.



Section Contents	Pages
Sterling Series 2 PowerPole and Posts	151-153
Sterling PowerPole and Posts	154-155

STERLING SERIES 2 POWERPOLES AND POSTS



- Fine tolerance extruded aluminium alloy.
- Single-sided or double-sided flush fitting hinged lids.
- Silver anodised finish or white powder coated finish to aluminium sections.
- Precision moulded PVC-U fittings.
- The PowerPole is suitable for suspended and solid ceiling applications.
- Cables can be fed from the ceiling, from the floor or from both.
- Optional key operated locks fitted to hinged lids give added security.
- Bespoke colours, special finishes and models available to order.





STERLING SERIES 2 POWERPOLES AND POSTS

Eliptical Double Sided PowerPole

Prod Code	Pack
NPPE36001441ANWH Anodised	1
NPPE36001441WHWH White	1

Maximum height of the Series 2 PowerPole is 3686mm. For additional heights within ceiling voids a 1 metre adjusting slide is available.

The Series 2 Double Sided PowerPole comes complete with 14 Accessory Boxes and a further 14 Boxes can be accommodated.



Circular Single Sided PowerPole

Prod Code	Pack
NPPC3600721ANWH Anodised	1
NPPC3600721WHWH White	1

Maximum height of the Series 2 PowerPole is 3686mm. For additional heights within ceiling voids a 1 metre adjusting slide is available.

The Series 2 Single Sided PowerPole comes complete with 7 Accessory Boxes and a further 7 Boxes can be accommodated.



Colour Code Suffix	Code	Colour
Please replace the last two letters with those detailed right.	ANWH	Anodised Cover/White Fittings
	WHWH	White Cover & Fittings



STERLING SERIES 2 POWERPOLES AND POSTS continued



Double Sided PowerPost

Prod Code	Pack
NPPE811142ANWH Anodised	1
NPPE811142WHWH White	1

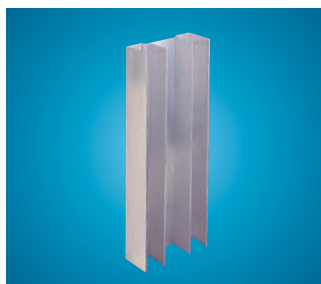
Single Sided PowerPost

Prod Code	Pack
NPPC80671ANWH Anodised	1
NPPC80671WHWH White	1

Overall height of the Series 2 PowerPost is 838mm.

The Series 2 Double Sided PowerPost comes complete with 14 Accessory Boxes.

The Series 2 Single Sided PowerPost comes complete with 7 Accessory Boxes.



Extended Adjusting Slide

Prod Code	Pack
PHAS2 1.15 metre	1

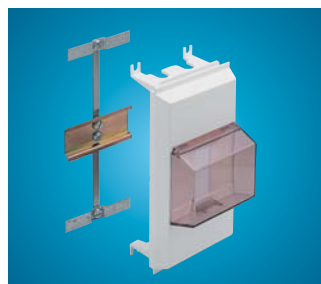
For PowerPole only. Mill finish.



Locking Assembly

Prod Code	Pack
NPPLA1ANWH Anodised	1
NPPLA1WHWH White	1

Contact Technical Services for details.



RCD/MCB Housing

Prod Code	Pack
EAH2WH	1
EAHC2WH with cover (as shown)	1

RCD not supplied by Marshall-Tufflex.



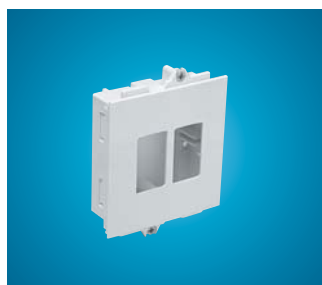
Single Gang Accessory Box

Prod Code	Pack
ESSB1WH	20



Wired 13 Amp Single Vertical Mount Switched Socket

Prod Code	Pack
ESS11WH	1



Vertical Flush Data Module

Prod Code	Size	Pack
EM526WH	2 x LJ6	1



Accessory Box Spacer

Prod Code	Width	Pack
ES1WH	14mm	4

All fittings and accessories are white unless indicated.

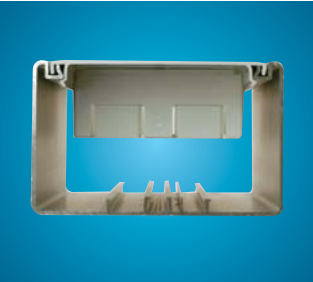
**FOR ADDITIONAL
DATA AND
TELECOMMUNICATION
OUTLETS SEE
PAGES 72 TO 75**



STERLING POWERPOLES AND POSTS

- Main compartments can be subdivided with clip-in fillets for segregation of services.
- Complete with 6 clip-in outlet boxes
- Configuration and location easily changed.
- Natural anodised finish or white powder coated finish to aluminium sections.
- An extensive range of RAL and BS Colours and Special finishes to order.
- Accessories can be mounted at any height.

A section of Single PowerPole

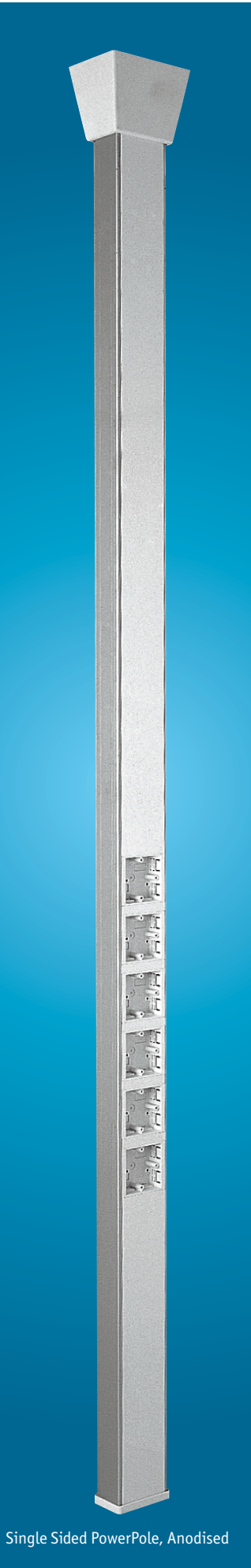


PowerPole Single Sided

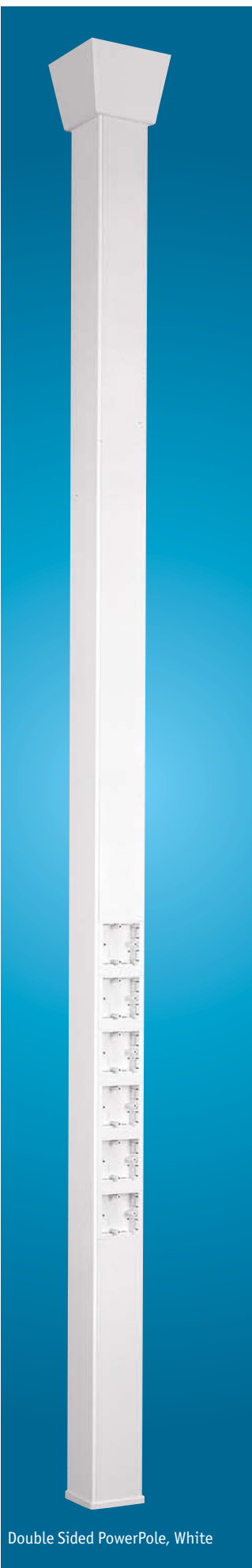
Prod Code	Pack
PPS36001ANWH with 250mm adjustable slide*	1
PPS36002ANWH with 1150mm adjustable slide*	1

*For additional height in ceiling void.
The Single Sided PowerPole comes complete with 6 Accessory Boxes. Available in white powder coated or natural anodised finish.

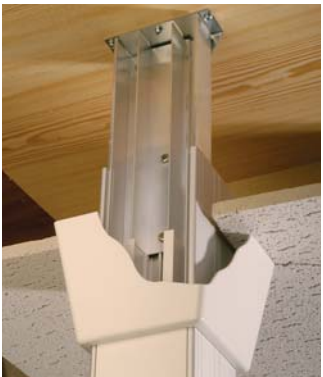
Colour Code Suffix	Code	Colour
Please replace the last two letters with those detailed right.	ANWH	Anodised Cover/White Fittings
	WHWH	White Cover & Fittings



Single Sided PowerPole, Anodised

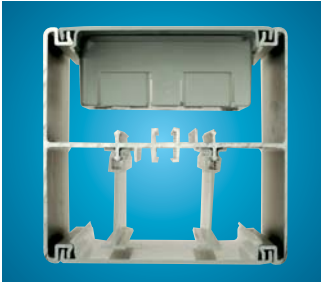


Double Sided PowerPole, White



Unique adjusting slide fixing system.

A section of Double PowerPole



PowerPole Double Sided

Prod Code	Pack
PP36001ANWH with 250mm adjustable slide*	1
PP36002ANWH with 1150mm adjustable slide*	1

*For additional height in ceiling void.
The Double Sided PowerPole comes complete with 6 Accessory Boxes. Available in white powder coated or natural anodised finish.



Double Sided PowerPole Extension Kit (1400mm)

Prod Code	Pack
PP1400EAN Anodised	1
PP1400EWH White	1



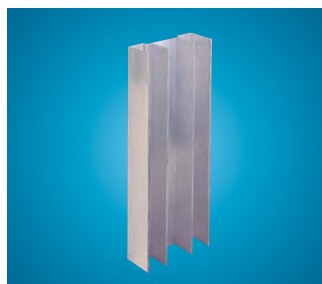
PowerPost Double Sided

Prod Code		Pack
PP685ANWH	Anodised	1
PP685WHWH	White	1

Overall height of the Sterling PowerPost is 692 mm.

The PowerPost comes complete with 6 Accessory Boxes.

Available in white powder coated or natural anodised finish.



Extended Adjusting Slide

Prod Code	Length	Pack
PHAS2	1.15m	1

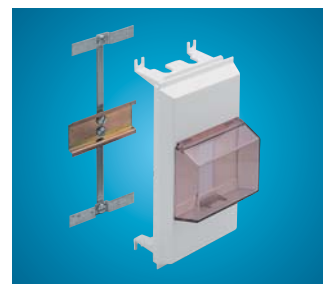
For PowerPole only. Mill finish.



Single Sided RCD/MCB Housing

Prod Code	Pack
EAHC4WH with cover (as shown)	1

RCD not supplied by Marshall-Tufflex.



Double Sided RCD/MCB Housing

Prod Code	Pack
EAH2WH	1
EAHC2WH with cover (as shown)	1

RCD not supplied by Marshall-Tufflex.



Single Sided Dividing Fillet

Prod Code	Pack
ELDF200	8 x 3m



Double Sided Dividing Fillet

Prod Code	Pack
EDF1	8 x 3m



Lid

Prod Code		Pack
PL1WH	PowerPole	1 x 3.6m
PL2WH	PowerPost	1 x 685mm



Accessory Box Spacer

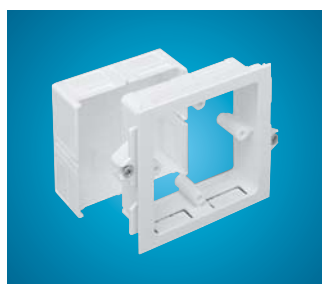
Prod Code	Pack
ES1WH	4

For use between Accessory Boxes.



Single Gang Accessory Box

Prod Code	Pack
ESSB1WH	20



Single Gang Adjustable Accessory Box

Prod Code	Depth	Pack
EAB1WH	32 - 38mm	10



Wired 13 Amp Single Vertical Mount Switched Socket

Prod Code	Pack
ESS11WH	1



Vertical Flush Data Module

Prod Code	Size	Pack
EM526WH	2 x LJ6	1

**FOR ADDITIONAL
DATA AND
TELECOMMUNICATION
OUTLETS SEE
PAGES 72 TO 75**