

# exacqVision®

Cross Platform IP Video Surveillance Software and Systems

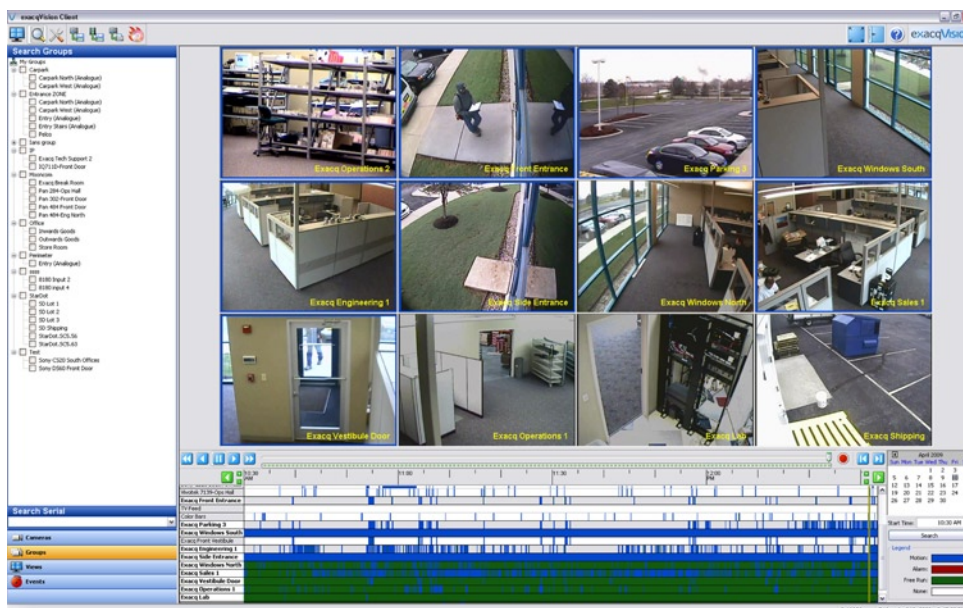


From Single Camera to Enterprise Applications

exacq® • [www.exacq.com](http://www.exacq.com) • +1.317.845.5710  
Technologies



- Fully functional for Windows, Linux & Mac
- Accessible via web browsers and mobile devices
- Digital PTZ (live & recorded video)
- Optical PTZ Camera Control (analog and IP)
- Graphic Search Display
- POS/ATM Text Insertion Search
- Event Search & Event Monitoring
- Pre/Post-alarm Recording
- SmartSearch
- Virtual Matrix
- Multi-monitor (video wall)
- Multi-Camera Playback & Export
- exacqRecall Single Button Export
- Analog & IP Cameras on One Interface
- Supports Megapixel and H.264 Cameras
- Megapixel Camera Cropping
- Covert Cameras
- Sensitivity Settings
- Selectable Frame Rate
- Privacy Block



## Powerful Searching

Search for and view video from multiple cameras across multiple exacqVision servers simultaneously. Scrub back and forth through video quickly and easily. Export the entire clip just as it appears as a self executable file that will open on any PC without the need to download software.

### exacqVision Browser Compatibility



### exacqVision Mobile Compatibility



### exacqVision Client Compatibility





Build your exacqVision Video Management System using any combination of the following servers:

## exacqVision Hybrid Servers

factory installed, windows & linux, analog & IP cameras



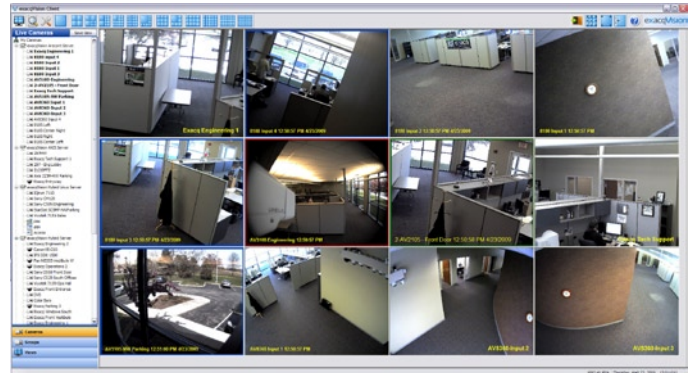
## exacqVision IP Camera Servers

factory installed, windows & linux, IP cameras



## Commercial Off-The-Shelf Servers

COTS solution, windows & linux, IP cameras



Administrate all of your servers with the free exacqVision Client software running on a Windows, Linux or Macintosh computer.



2U Rackmount  
exacqVision Hybrid NVR Server

- Three-Year Warranty on all exacqVision Servers
- One-Year Free Software upgrades
- Simple & Flexible IP Camera Licensing--Not tied to IP Camera MAC address
- Factory Installed Hybrid and IP Camera Servers
- Easy to Use Software with Powerful Features
- Phone and online Technical Support
- RAID-5 available on 4U servers
- iSCSI storage integration

- Integration with latest IP Cameras, Video Analytics, and Access Control Systems
- Free client software runs on remote computer (Windows, Linux or Mac) and operates all of your servers
- Web server allows access via web browsers and mobile devices



2U Rackmount  
exacqVision IP Camera iSCSI NVR Server










**exacqVision<sup>EL</sup>**  
Low Cost, Energy Efficient Hybrid Appliance

**NEW**

- True hybrid server
- Embedded Linux on solid-state drive
- 16 analog inputs per server
- Up to 24 IP cameras per server
- Compact, sturdy 1.5 U rackmount chassis
- Highly Energy efficient
- Fully compatible with all exacqVision systems

\* exacqVision Hybrid servers include 8 IP licenses (excluding exacqVision EL) and can be expanded to 64 or more IP licenses

	exacqVision Hybrid NVR Servers				exacqVision IP Camera Servers		
	Mini Desktop 4 or 16 (+8 Input*)	2U Rackmount 16 or 32 (+8 Input*)	4U Rackmount 16,32,48,64 (+8 Input*)	exacqVision EL 16 (up to 24 IP) <b>NEW</b>	Mini Desktop Up to 64 IP Cameras	2U Rackmount Up to 64 IP Cameras	4U Rackmount Up to 64 IP Cameras
							
<b>Max. Storage Capacity</b>	2 TB	6 TB	16 TB	2 TB	2 TB	6 TB	16 TB
<b>RAID-5 (option)</b>	No	No	Yes	No	No	No	Yes
<b>iSCSI storage integration</b>	Yes	Yes	Yes	No	Yes	Yes (iSCSI system available)	Yes
<b>Removeable Hard Drives</b>	No	No	Yes	No	No	No	Yes
<b>IP Inputs</b>	8 included (Up to 64 or more)	8 included (Up to 64 or more)	8 included (Up to 64 or more)	Up to 24	Up to 64 or more	Up to 64 or more	Up to 64 or more
<b>Video Analytics</b>	Optional Per IP Cameras	Optional Per IP Cameras	Optional Per IP Cameras	Optional Per IP Cameras	Optional Per IP Cameras	Optional Per IP Cameras	Optional Per IP Cameras
<b>Analog Inputs</b>	4 / 16	16 / 32	16 / 32 / 48 / 64	16	0	0	0
<b>Looping outputs</b>	0	16 / 0	16 / 0 / 0 / 0	0	N/A	N/A	N/A
<b>MUX Analog Output</b>	Yes	Yes	Yes	Yes	No	No	No
<b>Max. Analog IPS (NTSC)</b>	120 / 480	120 / 240 / 480 / 960	480 / 960 / 1440 / 1920	120 / 480	N/A	N/A	N/A
<b>Max. Analog IPS (PAL)</b>	100 / 400	100 / 200 / 400 / 800	400 / 800 / 1200 / 1600	100 / 400	N/A	N/A	N/A
<b>NIC Configuration</b>	1 GB (2nd is Optional)	1 GB	1 GB (2nd is Optional)	1 GB	1 GB (2nd is Optional)	1 GB (2nd is Optional)	1 GB (2nd is Optional)
<b>DVD/RW Drive</b>	Yes	Yes	Yes	Yes	Yes	Yes	Yes
<b>Redundant Power Supply</b>	No	No	Optional	No	No	Available on iSCSI unit	Optional
<b>System Watchdog</b>	Yes	Yes	Yes	Yes	No	No	No
<b>Audio Inputs</b>	1 (+IP Cameras)	4 (+IP Cameras)	4 / 8 / 1 / 1 (+IP Cameras)	4 (+IP Cameras)	Camera Defined	Camera Defined	Camera Defined
<b>Common Client</b>	Yes (Win/Linux/Mac)	Yes (Win/Linux/Mac)	Yes (Win/Linux/Mac)	Yes (Win/Linux/Mac)	Yes (Win/Linux/Mac)	Yes (Win/Linux/Mac)	Yes (Win/Linux/Mac)
<b>Server OS</b>	Windows or Linux	Windows or Linux	Windows or Linux	Linux	Windows or Linux	Windows or Linux	Windows or Linux
<b>Web Server</b>	Yes	Yes	Yes	Yes	Yes	Yes	Yes
<b>Bandwidth Throttling</b>	Yes	Yes	Yes	Yes	Yes	Yes	Yes
<b>Event Notification</b>							
<i>e-mail</i>	Yes	Yes	Yes	Yes	Yes	Yes	Yes
<i>text message</i>	Yes	Yes	Yes	Yes	Yes	Yes	Yes
<i>alarm output</i>	Yes	Yes	Yes	Yes	Optional	Optional	Optional
<i>relay output</i>	Yes	Yes	Yes	Yes	Optional	Optional	Optional
<i>DVD export</i>	Yes	Yes	Yes	Yes	Yes	Yes	Yes
<i>POS</i>	Yes	Yes	Yes	Yes	Yes	Yes	Yes
<i>Video Loss</i>	Yes	Yes	Yes	Yes	Yes	Yes	Yes
<i>Video Motion</i>	Yes	Yes	Yes	Yes	Yes	Yes	Yes
<i>System Temperature</i>	Yes	Yes	Yes	Yes	Yes	Yes	Yes
<i>Soft Triggers</i>	Yes	Yes	Yes	Yes	Yes	Yes	Yes
<b>Activity Log</b>	Yes	Yes	Yes	Yes	Yes	Yes	Yes



IP Camera Integration



Access Control Integration

