

CONTROL KEYBOARDS

The range of control keyboards comprises a wide range of solution for small as well for large systems. Built in shock- and thermo-resistant materials, with rubber keys, the range offers the perfect solution when the right keyboard must be chosen for each operator. The range offers the possibility to control from the small matrix and telemetry up to multiplexers, matrix and interface with the most common high speed dome, in a ergonomic and pleasant design. Remotable up to 1200m (3937ft), the serial communication towards matrix is in RS485.

DCBD	165
DCTEL	167
DCIR	169
DCJ	171
DCK	173
DCT	175

11

CONTROL KEYBOARDS



11

CONTROL KEYBOARDS

- Microprocessor controlled
- RS485 communication
- Ergonomic design



The DCBD keyboard is the solution for remote control of the SM series matrix.

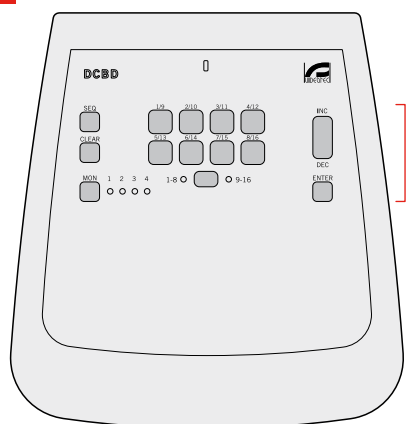
This microprocessor-controlled keyboard allows you to control the video switching of SM42A-82A, SM84A-164A.

The operator can manage the following control functions: video switching, sequences and alarm reset, to matrix setup through a video menu.

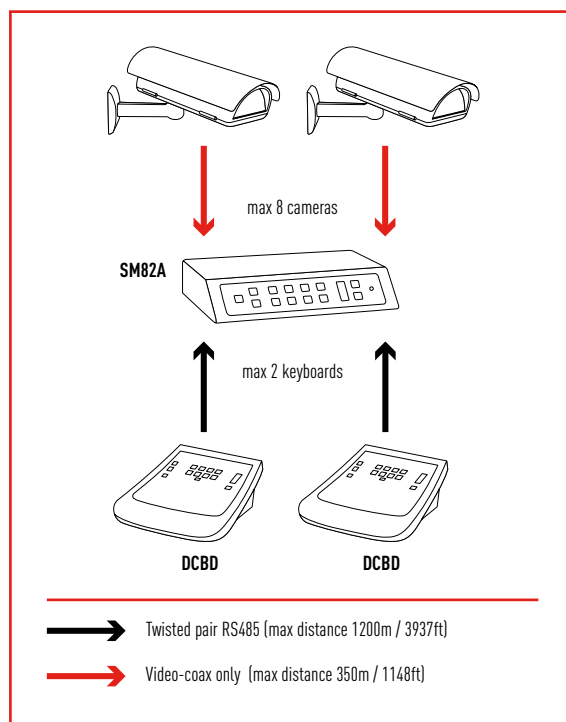
The serial communication to the matrix is RS485.

The DCBD can be fed by the standard external power supply or directly by the matrix, up to a maximum of 700m (2297ft).

DCBD



VIDEO
SWITCHING KEYS



TECHNICAL DATA

GENERAL

Control of max 16 cameras
Alarm reset
Supplied with instruction manual, wide range power supply, 3 power cables, 2 telephone cables, 2 jack shunt boxes RJ jack

MECHANICAL

Thermo resistant and shock proof ABS
14 rubber keys
Dimensions: 80x190x205mm (3.2x7.5x8in)
1 connector RJ11
Power supply jack connector
Configuration Dip-Switch
4 LEDs indicating the active monitor
8 LEDs indicating the active camera
2 LEDs indicating the active camera group (cameras 1 to 8 or cameras 9 to 16)
Power supply LED

ELECTRICAL

Power supply
- IN 100-240V AC - OUT 12V DC, 47/63Hz, 1A
It can be fed directly by matrix SM42A-82A, SM84A-164A up to a maximum of 700m (2297ft)

PROTOCOLS

Video Line
VIDEOTEC (1200, 9600, 19200, 38400 baudrate)
MACRO (1200, 9600, 19200, 38400 baudrate)

COMMUNICATIONS

RS485 line for communication with matrix controllable to a maximum of 1200m (3937ft)
Selection of communication rates

RELATED PRODUCTS

SM42A-82A Matrix 4/8 inputs and 2 outputs
SM84A-164A Matrix 8/16 inputs and 4 outputs

Retrofit on discontinued products: contact Videotec for further specifications.

ENVIRONMENT

Indoor
Operating temperature: 0°C / +40°C (+32°F / +104°F)

COMPLIANCE TO

CE according to EN 61000-6-3, EN 60950, EN 55022 Class B, EN 50130-4
FCC according to Part. 15 Class B



Unit Weight:
DCBD 0.6kg / 1.32lb

Package Weight:
DCBD 1.8kg / 3.9lb

Package Dimensions (BxHxL):
DCBD 31x17.4x26.4cm / 12.2x6.1x10.4in

Master Carton:
DCBD 5 units

- Microprocessor controlled
- RS485 communication
- Telemetry control
- Ergonomic design



The DCTEL keyboard is the best solution for the remote control of the SM series matrix and telemetry.

This microprocessor-controlled keyboard allows you to interface and control the video switching of SM42A-82A, SM84A-164A.

The operator can manage the following control functions: video switching, sequences and alarm reset, to matrix set-up through a video menu.

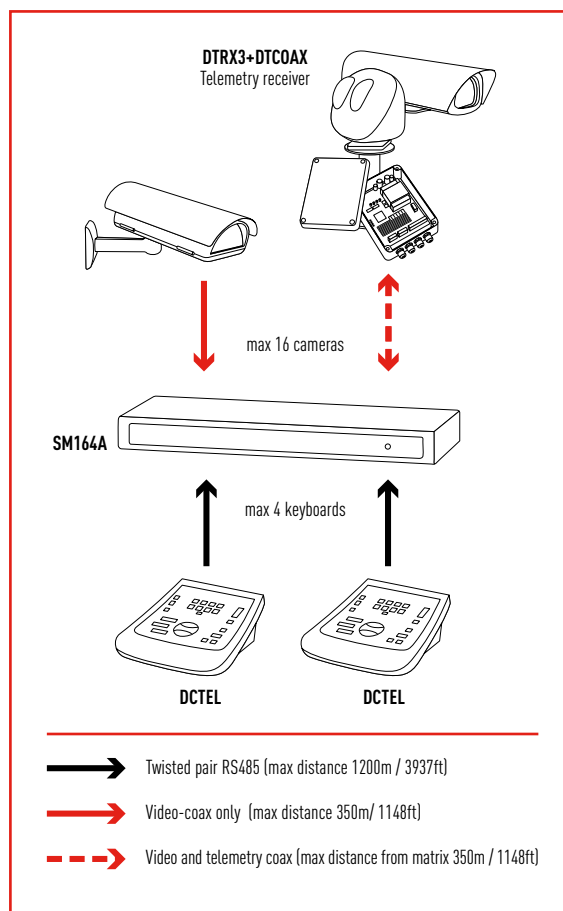
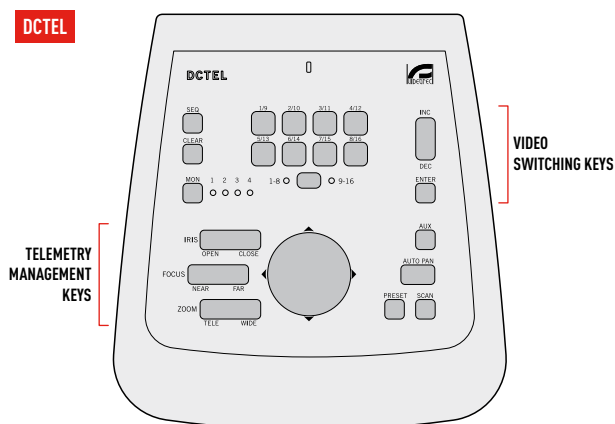
The DCTEL can control up to 16 digital telemetry receivers and the preset and scan functions with the DTRX3 receiver.

Two serial RS485 communication lines: one for the video matrix, one for the management of the telemetry.

The telemetry control can be also performed indirectly through the matrix or over the matrix RS485 dedicated serial output: autopan, preset, scan, zoom, focus iris and Aux.

The DCTEL can be fed by the standard external power supply or directly by the matrix up to a maximum of 700m (2297ft).

DCTEL



TECHNICAL DATA

GENERAL

16 cameras, control of max 16 telemetry receivers
P&T control, autopan, preset, zoom, focus, iris, Aux
Max 8 preset position for each P&T
Alarm reset

Supplied with instruction manual, wide range power supply, 3 power cables, 4 telephone cables, 4 jack shunt boxes RJ jack

MECHANICAL

Thermo resistant and shock proof ABS material
22 rubber keys
Dimensions 80x190x205mm (3.4x7.5x8in)
2 connectors RJ11
Power supply jack connector
Configuration Dip-Switch
4 LEDs indicating the active monitor
8 LEDs indicating the active camera
2 LEDs indicating the active camera group (cameras 1 to 8 or cameras 9 to 16)
Power supply LED

ELECTRICAL

Power supply

- IN 100-240V AC - OUT 12V DC, 47/63Hz, 1A

It can be fed directly by matrix SM42A-82A, SM84A-164A to a maximum of 700m (2297ft)

PROTOCOL

Video Line

VIDEOTEC (1200, 9600, 19200, 38400 baudrate)
MACRO (1200, 9600, 19200, 38400 baudrate)

Telemetry Line

VIDEOTEC (1200, 9600, 19200, 38400 baudrate)
MACRO (1200, 9600, 19200, 38400 baudrate)
PELCO D (2400 baudrate)
ENEO (1200, 9600, 19200, 38400 baudrate)

Pelco and Eneo are registered trademarks.

COMMUNICATIONS

Two RS485 lines for communication:

- one line for communication with matrix controllable to a maximum of 1200m (3937ft)
- one line for telemetry control up to 16 receivers

Selection of communication rates

RELATED PRODUCTS

SM42A-82A	Matrix 4/8 inputs and 2 outputs
SM84A-164A	Matrix 8/16 inputs and 4 outputs
MICRODEC485	Mini telemetry receiver 8 functions, 24V AC
DTMRX224	Telemetry receiver 12 functions, 24V AC
DTMRX2	Telemetry receiver 12 functions, 230V AC
DTRX324	Telemetry receiver 17 functions, 24V AC
DTRX3	Telemetry receiver 17 functions, 230V AC
DTCOAX	Over the coax board for DTRX3 only trough matrix series SM
DTRXDC	Telemetry receiver 13 functions, for PTH355P (only fix speed)

Retrofit on discontinued products: contact Videotec for further specifications.

ENVIRONMENT

Indoor

Operating temperature: 0°C / +40°C (+32°F / +104°F)

COMPLIANCE TO

CE according to EN 61000-6-3, EN 60950, EN 55022 Class B, EN 50130-4
FCC according to Part. 15 Class B



Unit Weight:
DCTEL 0.6kg / 1.3lb

Package Weight:
DCTEL 1.9kg / 4.2lb

Package Dimensions (BxHxL):
DCTEL 31x17.4x26.4cm / 12.2x6.1x10.4in

Master Carton:
DCTEL 5 units



- Infrared receiver located on the base of the remote control
- Control position free of loose cables
- RS485 Communication
- Ergonomic design
- For matrix series SM42A-82A, SM84A-164A and telemetry receiver

The DCIR is an infrared remote control allowing the "On Screen Menu" set-up, the monitors and cameras recall and the alarms management for SM matrix series.

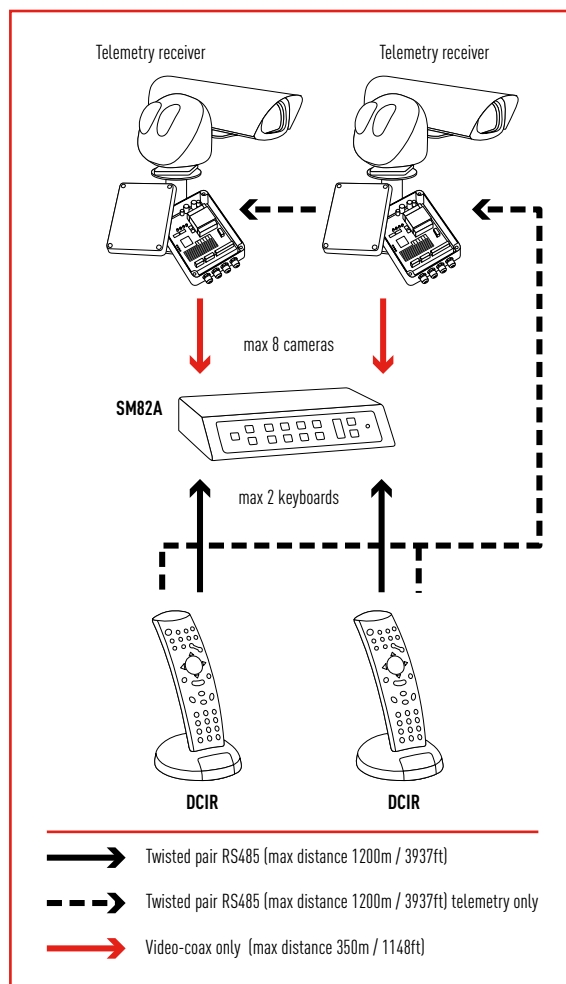
The matrix control is performed through a serial RS485 communication line while another RS485 line allows an independent management of telemetry.

The DCIR can fully control the following receiver drivers: DTRMX2, MICRODEC485, DTRX3.

The remote control can manage up to 999 of the above receivers in a daisy chain scheme, to control preset, autopan, patrol and auxiliary functions, like wiper control, with the receiver-driver DTRX3.

The telemetry control can also be performed through a matrix: over the coax or the matrix RS485 serial output.

The DCIR is usually fed by the matrix, over 700m (2297ft) or, if the system does not include a matrix, a local power supply is necessary. The infrared receiver is located on the base of the DCIR and remote control must be directed towards the base for the reception of the commands.



TECHNICAL DATA

GENERAL

Up to 999 video inputs (or telemetry receivers) and 99 outputs (monitors)
 P&T control, autopan, preset, patrol, scan zoom, focus, iris, Aux
 Supplied with instruction manual, 1 telephone cable, 2 jack shunt boxes RJ jack

MECHANICAL

ABS shock-proof plastic material
 Rubber keys
 Remote control mounted on its base, dimensions: 102x130x180mm (4x5x7in)
 1 phone cable with RJ11 connector

ELECTRICAL

The base can be fed directly by matrix SM42A-82A, SM84A-164A up to a maximum of 700m (2297ft)
 Remote control powered by two LR03 1.5V AAA batteries (not supplied)
 Ability to power the receiving base by means of an external 12V DC power supply (not supplied)

PROTOCOLS

Video Line

MACRO (1200, 9600, 19200, 38400 baudrate)

Telemetry Line

VIDEOTEC (1200, 9600, 19200, 38400 baudrate)

MACRO (1200, 9600, 19200, 38400 baudrate)

COMMUNICATIONS

Two RS485 lines for communication:

- one line for communication with matrix which can be controlled to a maximum of 1200m (3937ft)
- one line for telemetry control up to 999 receivers

Selection of communication rates (38400, 19200, 9600 o 1200 baud), both video and telemetry

RELATED PRODUCTS

SM42A-82A	Matrix 4/8 input and 2 output
SM84A-164A	Matrix 8/16 input and 4 output
MICRODEC485	Mini telemetry receiver 8 functions, 24V AC
DTMRX224	Telemetry receiver 12 functions, 24V AC
DTMRX2	Telemetry receiver 12 functions, 230V AC
DTRX324	Telemetry receiver 17 functions, 24V AC
DTRX3	Telemetry receiver 17 functions, 230V AC
DTCOAX	Over the coax board for DTRX3 only trough matrix series SM
DTRXDC	Telemetry receiver 13 functions, for PTH355P (only fix speed)
MISTRAL	Dome Camera

Retrofit on discontinued products: contact Videotec for further specifications.

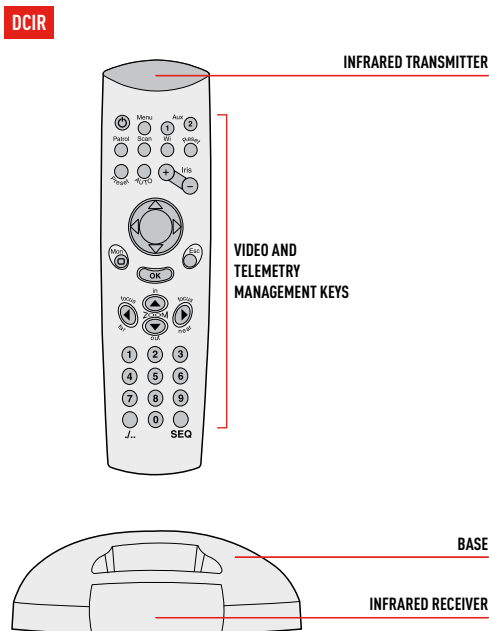
ENVIRONMENT

Indoor

Operating temperature: 0°C / +45°C (+32°F / +113°F)

COMPLIANCE TO

CE according to EN 61000-6-3, EN 60950, EN 55022 Class B, EN 50130-4
 FCC according to Part. 15 Class B



Unit Weight:
 DCIR 0.3kg / 0.7lb

Package Weight:
 DCIR 0.5kg / 1.1lb

Package Dimensions (BxHxL):
 DCIR 25x6.5x25cm / 9.8x2.5x9.8in

Master Carton:
 DCIR 20 units

VIDEO AND TELEMETRY CONTROL KEYBOARD

- Microprocessor controlled
- LCD display back-lit
- 3 RS485 communication channels
- Telemetry controlled by joystick
- Ergonomic design
- Direct control of many Speed Domes



The DCJ represents the top as far as performance and ergonomic design.

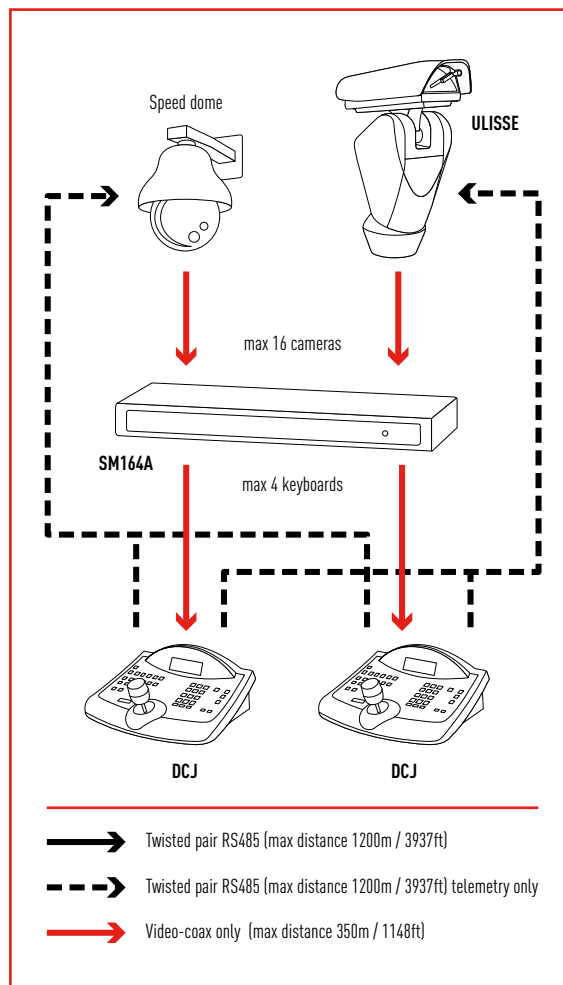
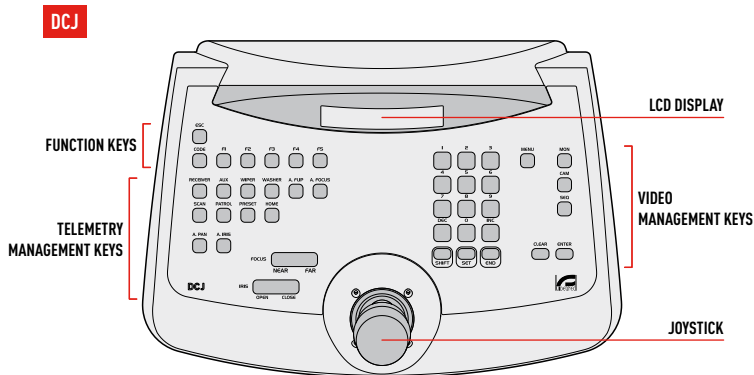
The DCJ, microprocessor controlled, allows you to interface and control SM42A-82A, SM84A-164A and SM328A matrix.

The operator can set up, through the video menu, the SM42A-82A, SM84A-164A and SM328A matrix and it is possible to control their functions.

An LCD display assists the operator during all the control functions. Furthermore, the DCJ allows you to control up to 999 telemetry receivers, the preset and patrol functions together with the DTRX3 or DTRXDC receivers. The three axis joystick allows a simple manual control and gives the ability to drive variable speed Pan & Tilt, and further to the most common high speed domes and can be used also for the menu set-up.

Three serial RS485 communication lines are available: one for a video matrix and multiplexer and two used for the management of independent telemetry lines.

A RS232 serial connection allows the firmware update from a PC.



TECHNICAL DATA

GENERAL

Joystick for Pan/Tilt/Zoom control and moving the cursor within the menus

Display back-lit

Ergonomic keys configuration

Menu in 4 languages (Italian, English, French, German)

Three password levels: connection, set-up, alarm reset

Macro-functions keys (max 10): monitor selection, camera selection, selection of receiver associated to the camera, previously stored P&T scan position

9999 cameras, 999 telemetry receivers, 99 monitors

Alarm and/or break communication buzzer

Various accessory functions like keys enabling/disabling, energy saving, error alert, etc.

Supplied with instruction manual, wide range power supply, 3 power cables, 6 telephone cables, 6 jack shunt boxes RJ jack

MECHANICAL

Thermo resistant and shock proof ABS material

Rubber keys

Dimensions: 298x107x210mm (11.7x4.2x8.2in)

3 axis proportional joystick, with calibration and test

Display 4 lines of 20 characters

3 connectors RJ11

Power supply jack connector

DB9 connector for firmware update

Configuration Dip-Switch

ELECTRICAL

Power supply

- IN 100-240V AC - OUT 12V DC, 47/63Hz, 1A

PROTOCOL

Video Line

VIDEOTECH (1200, 9600, 19200, 38400 baudrate)

MACRO (1200, 9600, 19200, 38400 baudrate)

Telemetry Line

VIDEOTECH (1200, 9600, 19200, 38400 baudrate)

MACRO (1200, 9600, 19200, 38400 baudrate)

PELCO D (2400 baudrate)

COMMUNICATIONS

Three RS485 serial lines for communication:

- one direct line with matrix and multiplexer which can be controlled to a maximum of 1200m (3937ft)
- two lines for two independent telemetry daisy chains, up 999 telemetry receivers which can be controlled to a maximum of 1200m (3937ft)

Serial connection RS232 to PC for firmware update, controllable to a maximum distance 15m (49ft)

RELATED PRODUCTS

SM42A-82A Matrix 4/8 input and 2 output

SM84A-164A Matrix 8/16 input and 4 output

SM328A Matrix 32 input and 8 output

MICRODEC485 Mini telemetry receiver 8 functions, 24V AC

DTMRX224 Telemetry receiver 12 functions, 24V AC

DTMRX2 Telemetry receiver 12 functions, 230V AC

DTRX324 Telemetry receiver 17 functions, 24V AC

DTRX3 Telemetry receiver 17 functions, 230V AC

DTCOAX Over the coax board for DTRX3 only through matrix series SM

DTRXDC Telemetry receiver 13 functions, for PTH355P

ULISSE Positioning Unit

MISTRAL Dome Camera

Retrofit on discontinued products: contact Videotec for further specifications.

INTERFACE WITH OTHER PRODUCTS

Multiplexers

ADECO AXMD16EX and AXCD16EX

JAVELIN / HITRON JPMCD16X, JPMD16X

SANYO MPX-CD163P

SONY YS-DX516P

SONY HSRX200, HSRX209, HSR216P

ELMO D7993-PHMX and D7963-PHCL

Dome

BOSCH Basic dome series

ELBEX EXC7000-EXC8000 (Instant Dome)

ELMO D7720B-J1P

ERNITEC Saturn

HITRON FASTRAX II HID2404SM11P

JVC TK-C675E, TK675BE e TK-C676

KALATEL Cyberdome e Cyberscout

PANASONIC WV-CS600, WV-CS850

SAMSUNG SCC641P e SCC643P

SANTEC VDC300ID

SENSORMATIC Delta Dome II

STAR SMD

VCL VC5S-ORBM

Bosh, Elbex, Elmo, Eneo, Ernitec, JVC, Kalatel, Panasonic, Pelco, Samsung, Sensormatic, Sanyo, Star, VCL, Javelin, Hitron and Sony are registered trademarks

Because DCJ may be interfaced with equipment not manufactured by Videotec, it is possible that the interface protocols have changed or are in a different configuration from units previously tested by us. Because Videotec recommends a bench test prior to installation, Videotec will not be liable for any installation costs or lost revenues in the event a compatibility problem will occur.

ENVIRONMENT

Indoor

Operating temperature: 0°C / +40°C (+32°F / +104°F)

COMPLIANCE TO

CE according to EN 61000-6-3, EN 60950, EN 55022 Class B, EN 50130-4

FCC according to Part. 15 Class B



Unit Weight:
DCJ 1.1kg / 2.4lb

Package Weight:
DCJ 3.1kg / 6.8lb

Package Dimensions (BxHxL):
DCJ 42.3x17.2x26.2cm / 16.6x6.7x10.3in

Master Carton:
DCJ 4 units

- Microprocessor controlled
- LCD display back-lit
- 1 RS485 communication channel
- Ergonomic design



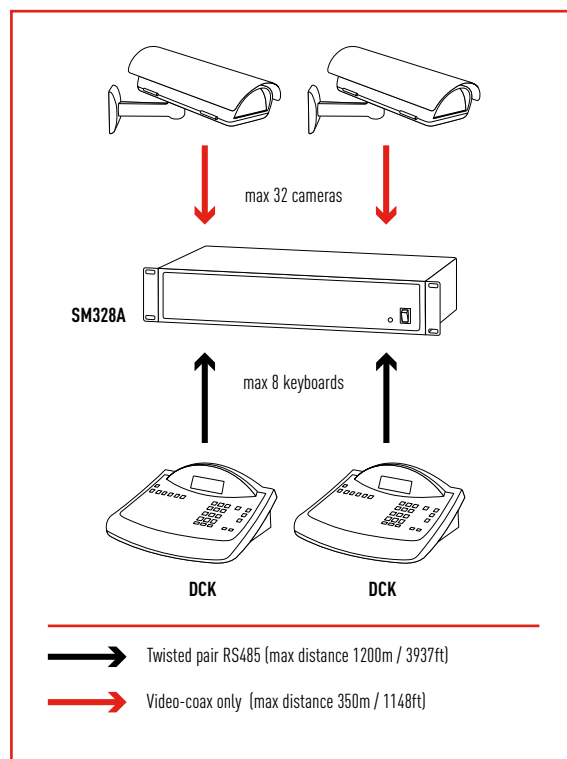
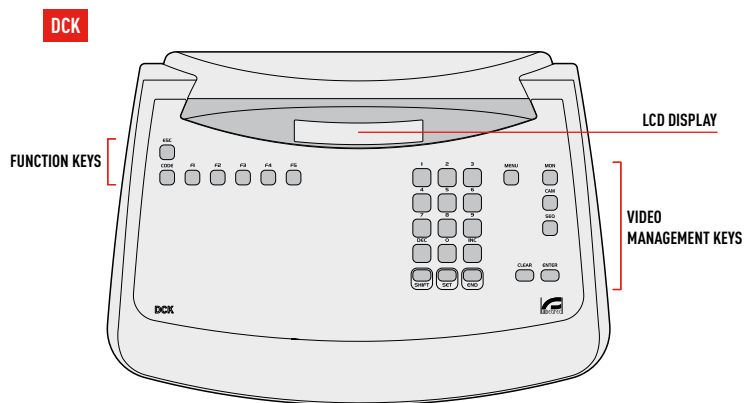
This microprocessor-controlled keyboard allows you to interface and control SM42A-82A, SM84A-164A and SM328A matrix.

The operator can set up, through a video menu, and control the SM42A-82A, SM84A-164A and SM328A matrix.

A LCD display assists the operator during all the control functions.

One serial RS485 communication line for the video matrix.

A RS232 serial connection allows the firmware update from a PC.



TECHNICAL DATA

GENERAL

Display back lit
Ergonomic keys configuration
Menu in 4 languages (Italian, English, French and German)
Three password levels: connection, set-up, alarm reset
Macro-functions keys (max 10): monitor selection, selection of camera on active monitor
9999 cameras, 99 monitors
Alarm and/or break-ins communication buzzer
Various accessory functions like keys enabling/disabling, energy saving, error alert, etc.
Supplied with instruction manual, wide range power supply, 3 power cables, 2 telephone cables, 2 jack shunt boxes RJ jack

MECHANICAL

Thermo resistant and shock-proof plastic material
Rubber keys
Dimensions: 298x107x210mm (11.7x4.2x8.2in)
Display 4 lines of 20 characters
1 connector RJ11
Power supply jack connector
DB9 connector
Configuration Dip-Switch

ELECTRICAL

Power supply
- IN 100-240V AC - OUT 12V DC, 47/63Hz, 1A

PROTOCOL

Video Line
VIDEOTEC (1200, 9600, 19200, 38400 baudrate)
MACRO (1200, 9600, 19200, 38400 baudrate)

COMMUNICATIONS

One RS485 line for communication:
- one line for communication with matrix and multiplexer controllable to a maximum of 1200m (3937ft)
Serial connection RS232 to PC for firmware update, controllable to a maximum distance 15m (49ft)

RELATED PRODUCTS

SM42A-82A Matrix 4/8 input and 2 output
SM84A-164A Matrix 8/16 input and 4 output
SM328A Matrix 32 input and 8 output

Retrofit on discontinued products: contact Videotec for further specifications.

INTERFACE WITH OTHER PRODUCTS

Multiplexer

ADEMCO AXMD16EX e AXCD16EX
JAVELIN / HITRON JPMCD16X, JPMD16X
SANYO MPX-CD163P
SONY YS-DX516P

DVR

SONY HSRX200, HSRX209, HSR216P

Ademco, Javelin, Hitron, Sanyo and Sony are registered trademarks.

Because DCK may be interfaced with equipment not manufactured by Videotec, it is possible that the interface protocols have changed or are in a different configuration from earlier tested units from us. Because Videotec recommends a bench test prior to installation, Videotec will not be liable for any installation costs or lost revenues in the event a compatibility problem will occur.

ENVIRONMENT

Indoor
Operating temperature: 0°C / +40°C (+32°F / +104°F)

COMPLIANCE TO

CE according to EN 61000-6-3, EN 60950, EN 55022 Class B, EN 50130-4
FCC according to Part. 15 Class B



Unit Weight:
DCK 1.0kg / 2.2lb

Package Weight:
DCK 3.1kg / 6.8lb

Package Dimensions (BxHxL):
DCK 42.3x17.2x26.2cm / 16.6x6.7x10.3in

Master Carton:
DCK 4 units

VIDEO AND TELEMETRY VIRTUAL CONTROL KEYBOARD

- Microprocessor controlled
- Virtual keyboard with configurable graphic-screen display
- RS485 communication
- Ergonomic design
- Telemetry controlled by joystick



The DCT represents the top of the line keyboard for performance and ergonomic design.

A back-lit graphic display with touch-screen helps the operator during all the control functions. It is possible to customize up to 30 user maps (graphic user interface), associating up to 40 keys (macro-command*) for each map.

The image at start-up and service pages can be customized as well. An easy PC graphic user interface allows you to design these maps and they can be simply uploaded on the keyboard through RS232 serial connection. The same connection allows the keyboard set-up and firmware update.

If the maps (graphic user interface) are not used, the touch-screen keyboard can be customized using the 35 macro-function keys.

Furthermore the DCT is supplied with 6 languages menu with the possibility of upgrading it up to 12 languages with handling by the programmer.

The microprocessor controlled DCT allows you to interface and control SM42A-82A, SM84A-164A and SM328A matrix.

The operator can set up, through the video menu, the SM42A-82A, SM84A-164A and SM328A matrix.

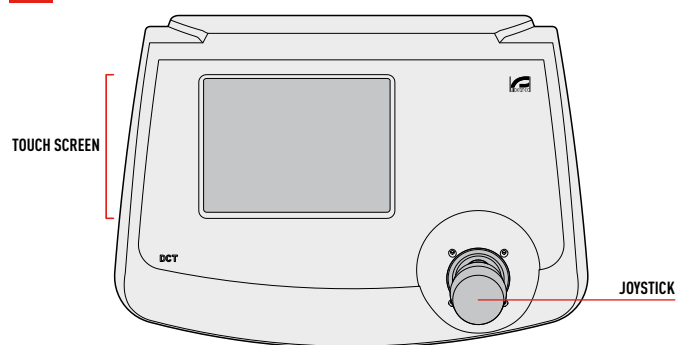
Furthermore, the touch-screen keyboard allows the control up to 10.000 telemetry receivers, the preset and patrol functions together the DTRX3 or DTRXDC receivers. The three axis joystick allows a simple manual control and gives the possibility of controlling variable speed Pan & Tilt, and to interface the most common high speed domes.

The management of every controlled device, from matrix to mux and DVR, from telemetry receivers to speed domes, is far easier because only the existing device functions are enabled.

Three serial RS485 communication lines: one to the video matrix or multiplexer/DVR, two for the management of two independent telemetry lines.

* more functions associated to the same key (for example: camera selection and scan command at the position 2).

DCT



TECHNICAL DATA

GENERAL

Joystick for Pan/Tilt/Zoom control

Graphic display 320x240 pixel back-lit by white LED

Ergonomic design

Menu in 6 languages (Italian, English, French and German, Spanish and Dutch) expandable to 12 (management by the programmer)

Three password levels: connection, set-up, alarm reset

Three passwords for the graphic environment management

Customization up to 30 user maps and ability to set-up up to 40 keys (macro-command) for each map

35 functions keys (macro-command) freely configurable

Up to 10000 cameras, 10.000 (lines A) + 10.000 (lines B) telemetry receivers, 100 monitors

Alarm and/or breaks-ins communication buzzer

Supplied with instruction manual, wide range power supply, 3 power cables, 6 telephone cables, 6 shunt boxes RJ jack and applications for the management of the keyboard on PC

MECHANICAL

Thermo-resistant and shock proof ABS material

Dimensions: 298x107x210mm (11.7x4.2x8.2in)

3 axis proportional joystick

Graphic display dimensions: 115x86mm (4.5x3.4in)

3 connectors RJ11

Power supply jack connector

DB9 connector

Configuration Dip-Switch

ELECTRICAL

Power supply

- IN 100-240V AC - OUT 12V DC, 47/63Hz, 1A

PROTOCOL

Video Line

VIDEOTECH (1200, 9600, 19200, 38400 baudrate)

MACRO (1200, 9600, 19200, 38400 baudrate)

Telemetry Line

VIDEOTECH (1200, 9600, 19200, 38400 baudrate)

MACRO (1200, 9600, 19200, 38400 baudrate)

PELCO D (2400 baudrate)

COMMUNICATIONS

Three RS485 lines for communication

- one direct line with video matrix and multiplexer/Dvr controllable to a maximum of 1200m (3937ft)
- two lines for two independent telemetry daisy chain up 10.000 telemetry receivers for line controllable to a maximum of 1200m (3937ft)

Serial connection RS232 to PC for graphic layout creation, keyboard set-up and firmware update controllable to a maximum of 15m (49ft)

RELATED PRODUCTS

SM42A-82A	Matrix 4/8 input and 2 output
SM84A-164A	Matrix 8/16 input and 4 output
SM328A	Matrix 32 input and 8 output
MICRODEC485	Mini telemetry receiver 8 functions, 24V AC
DTMRX224	Telemetry receiver 12 functions, 24V AC
DTMRX2	Telemetry receiver 12 functions, 230V AC
DTRX324	Telemetry receiver 17 functions, 24V AC
DTRX3	Telemetry receiver 17 functions, 230V AC
DTCOAX	Over the coax board for DTRX3 only through matrix series SM
DTRXDC	Telemetry receiver 13 functions, for PTH355P
ULISSE	Positioning Unit
MISTRAL	Dome Camera

Retrofit on discontinued products: contact Videotec for further specifications.

INTERFACE WITH OTHER PRODUCTS

Multiplexer

ADECO AXMD16EX and AXCD16EX

ENEO VCMT8009, VCMT80016, VBMT8009, VBMT8016

SANYO MPX-CD163P

SONY YS-DX516P

DVR:

EL.MO D7993-PHMX and D7963-PHCL

ENEO DLR-204, DLR-109, DLR-116

SAMSUNG SHR-3160P and SHR-4160

SANYO DSR3016P and DSR3716P

SONY HSR-216P

Dome

BOSCH Basic dome series

ELBEX EXC8000 (Instant Dome)

ELMO D7720B-J1P

ERNITEC Saturn

HITRON FASTRAX II HID2404SM11P

JVC TK-C675E, TK675BE e TK-C676

KALATEL Cyberdome e Cyberscout

MARK MERCER Quick Switch D150QSPT

PANASONIC WV-CS600 and WV-CS850

SAMSUNG SCC641P and SCC643P

SANYO VCC9300P and VCC9400P

SANTEC VDC300ID

SENSORMATIC DeltaDome II

VCL VC5S-ORBM

FREEMUX

The keyboard allows the control of multiplexers, DVR, PC or other devices through the implementation of the proprietor Macro Protocol. The graphic user interface and the control keys can be freely associated by the user/installer. The total number of commands is 128; in the main layout up to 30 command keys can be freely handled.

Ademco, Bosch, Elbex, Elmo, Eneo, Ernitec, JVC, Kalatel, Mark Mercer, Panasonic, Pelco, Samsung, Sensormatic, Sanyo, VCL, Sony, Hitron are registered trademarks.

Because DCT may be interfaced with equipment not manufactured by Videotec, it is possible that the interface protocols have changed or are in a different configuration from earlier tested units from us. Because Videotec recommends a bench test prior to installation, Videotec will not be liable for any installation costs or lost revenues in the event a compatibility problem will occur.

ENVIRONMENT

Indoor

Operating temperature: 0°C / +40°C [+32°F / +104°F]

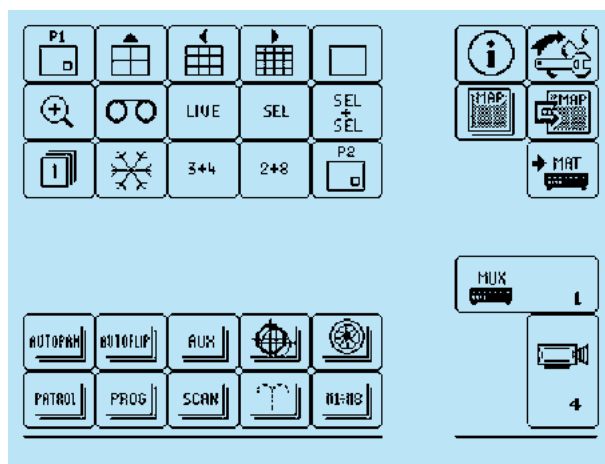
COMPLIANCE TO

CE according to EN 61000-6-3, EN 60950, EN 55022 Class B, EN 50130-4

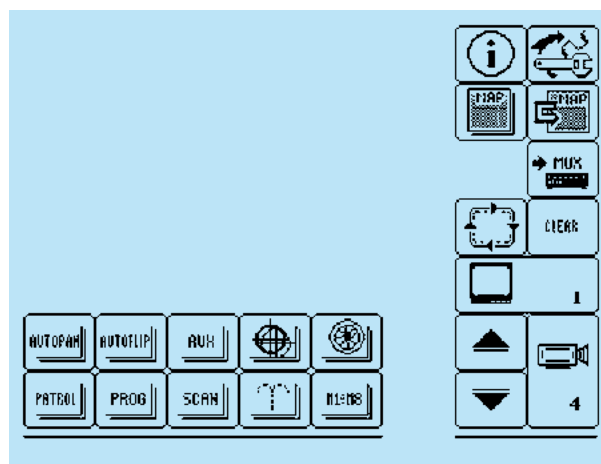
FCC according to Part. 15 Class B

UL listed

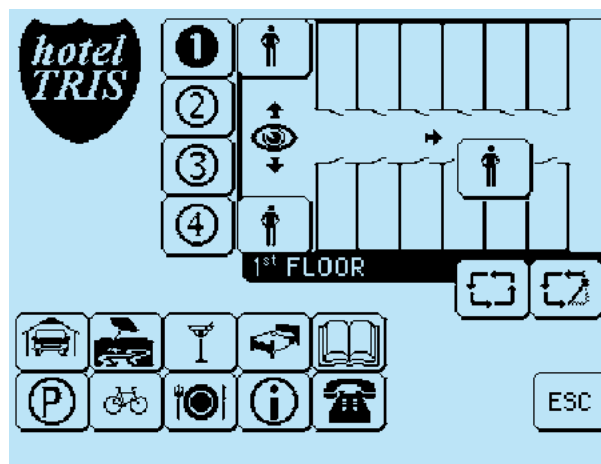
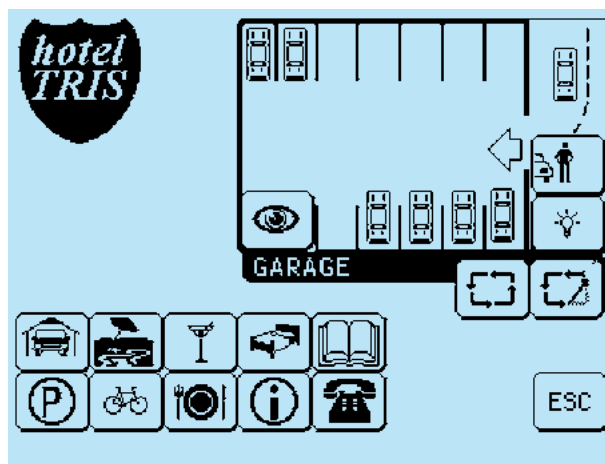
Example of screen layout for multiplexer and telemetry control



Example of screen layout for matrix and telemetry control



Example of screen layout of the graphic interface



Unit Weight:
DCT 1.1kg / 2.4lb

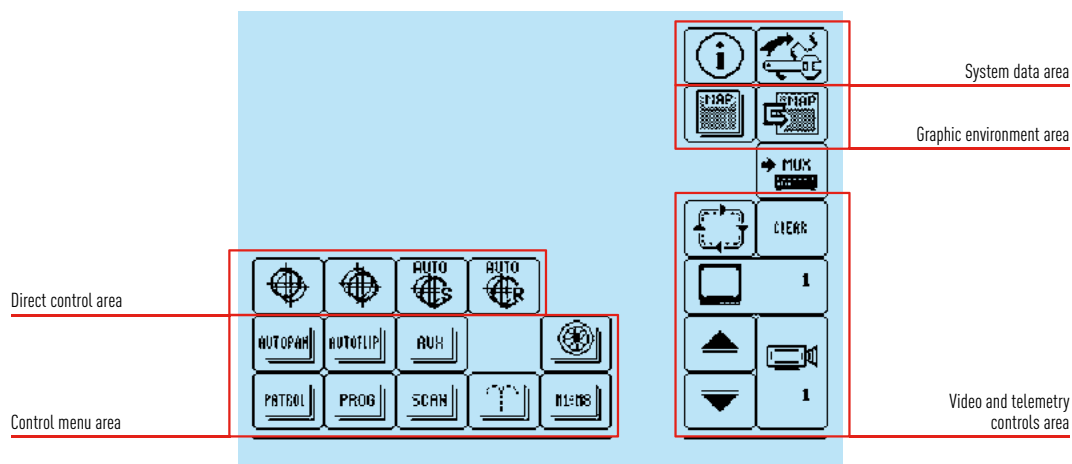
Package Weight:
DCT 3.8kg / 8.4lb

Package Dimensions (BxHxL):
DCT 24x14.5x41cm / 9.4x5.7x16in

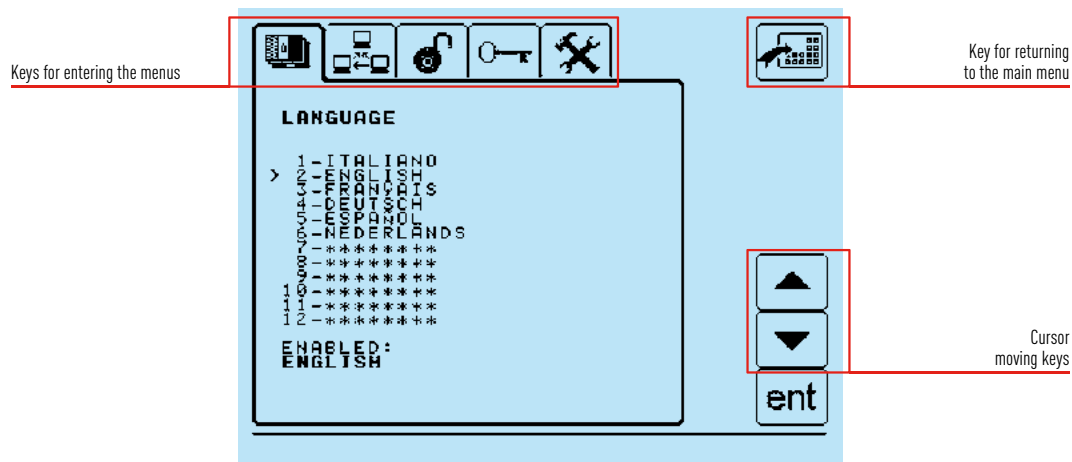
Master Carton:
DCT 4 units

KEYBOARD SETUP

Example: Main menu.
It represents only one of the possible system configurations.



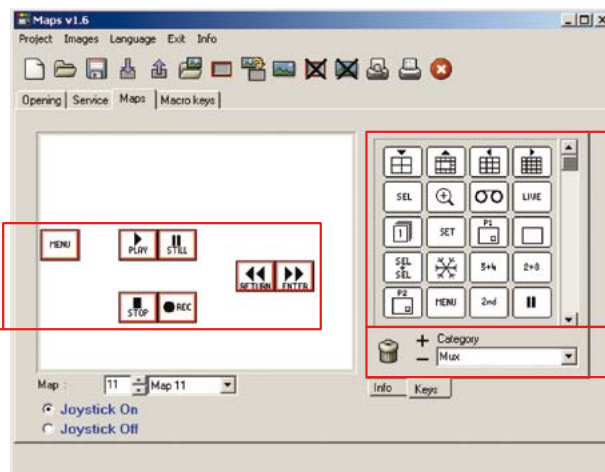
Example: Language menu.



GRAPHIC USER INTERFACE SETUP FROM PC

The customization of the keyboard is extremely easy due to the PC software. The software allows you to import maps, images, icons libraries and to easily implement the keys. Management up to 30 Graphic User Interface.

Drag and drop imported icons

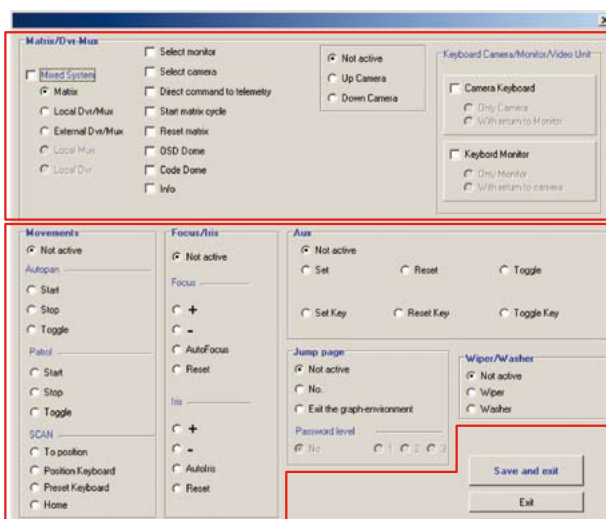


MUX icons library

Selection of libraries

At every key multiple functions can be assigned in order to control video and telemetry devices (even combined).

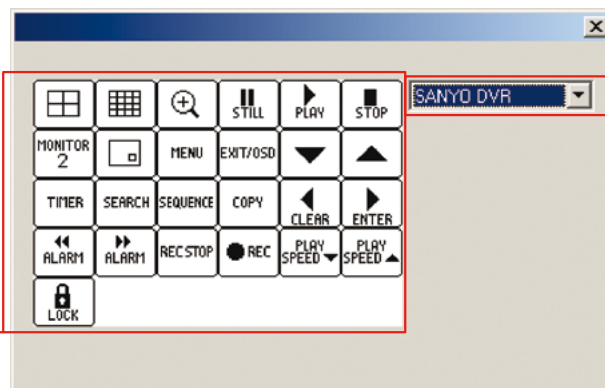
Function to be combined to the key



Video/telemetry serial line commands setup

Specific keys for control of different MUX and DVR's allow you to easily select the required functions. Choosing the device, the available functions will be shown with the graphic format of the device itself.

Specific keys set for every MUX/DVR



Easy video unit selection

