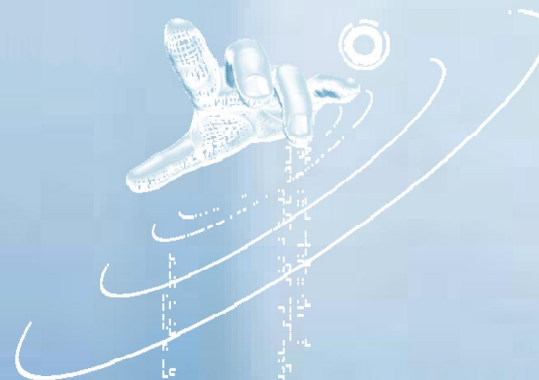




# Панели оператора 2010

---



## 2009 Сравнительные характеристики

Модель	★ MT6050i	MT6056T	★ MT6056i	MT6070T	★ MT6070iH	MT8056T	MT8070T	★ MT8070iH	MT6104T	★ MT6100i
Экран	4.3" TFT	5.6" TFT	5.6" TFT	7" TFT Widescreen	7" TFT Widescreen	5.6" TFT	7" TFT Widescreen	7" TFT Widescreen	10.4" TFT	10" TFT Widescreen
Разрешение	480x272	320x234	320x234	480x234	800x480	320x234	480x234	800x480	640x480	800x480
Яркость (cd/m) <sup>2</sup>	450	300	300	350	300	300	350	300	400	300
Контраст	500:1	300:1	300:1	200:1	500:1	300:1	200:1	500:1	300:1	300:1
Подсветка	LED	LED	LED	LED	LED	LED	LED	LED	CCFL x 2	LED
Время работы	30,000 hr	30,000 hr	30,000 hr	30,000 hr	30,000 hr	30,000 hr	30,000 hr	30,000 hr	40,000 hr	30,000 hr
Тип сенсорного экрана	4-wire Resistive	4-wire Resistive	4-wire Resistive	4-wire Resistive	4-wire Resistive	4-wire Resistive	4-wire Resistive	4-wire Resistive	4-wire Resistive	4-wire Resistive
Объём памяти (МБ)	128	32	128	32	128	32	32	128	32	128
Объём ОЗУ (МБ)	64	64	64	64	64	64	64	64	64	64
Процессор	32bit RISC 400MHz	32bit RISC 200MHz	32bit RISC 400MHz	32bit RISC 200MHz	32bit RISC 400MHz	32bit RISC 200MHz	32bit RISC 200MHz	32bit RISC 400MHz	32bit RISC 200MHz	32bit RISC 400MHz
Карта CompactFlash	N/A	Yes	N/A	N/A	N/A	Yes	N/A	N/A	Yes	N/A
Карта SecureDigital	N/A	N/A	N/A	N/A	N/A	N/A	N/A	Yes	N/A	Yes
USB Хост	N/A	USB 2.0 x 2	N/A	USB 2.0 x 2	USB 1.1 x 1	USB 2.0 x 2	USB 2.0 x 2	USB 1.1 x 1	USB 2.0 x 3	USB 1.1 x 1
USB Клиент	USB 2.0 x 1	N/A	USB 2.0 x 1	N/A	USB 2.0 x 1	N/A	N/A	USB 2.0 x 1	N/A	USB 2.0 x 1
Сеть Ethernet	N/A	N/A	N/A	N/A	N/A	10/100 Base-T	10/100 Base-T	10/100 Base-T	N/A	N/A
Порт PS/2	N/A	N/A	N/A	N/A	N/A	N/A	N/A	N/A	N/A	N/A
Слот mini-PCI	N/A	N/A	N/A	N/A	N/A	N/A	N/A	N/A	N/A	N/A
Выход VGA	N/A	N/A	N/A	N/A	N/A	N/A	N/A	N/A	N/A	N/A
COM порт	COM1 (RS232 / RS485 2W/4W)	COM1 (RS232 / RS485 2W/4W), COM2 (RS232), COM3 (RS232 / RS485 2W)	COM1 (RS232 / RS485 2W/4W)	COM1 (RS232 / RS485 2W/4W), COM2 (RS232), COM3 (RS232 / RS485 2W)	COM1 (RS232 / RS485 2W/4W), COM2 (RS232), COM3 (RS232 / RS485 2W)	COM1 (RS232 / RS485 2W/4W), COM2 (RS232), COM3 (RS232 / RS485 2W)	COM1 (RS232 / RS485 2W/4W), COM2 (RS232), COM3 (RS232 / RS485 2W)	COM1 (RS232 / RS485 2W/4W), COM2 (RS232), COM3 (RS232 / RS485 2W)	COM1 (RS232 / RS485 2W/4W), COM2 (RS232), COM3 (RS232 / RS485 2W)	COM1 (RS232 / RS485 2W/4W), COM2 (RS232), COM3 (RS232 / RS485 2W)
Звуковой выход	N/A	N/A	N/A	N/A	N/A	N/A	N/A	Option	N/A	N/A
RTC	N/A	Yes	Yes	Yes	Yes	Yes	Yes	Yes	Yes	Yes
Входное напряжение	24±20% VDC	12~24VDC	24±20% VDC	24±10% VDC	24±20% VDC	12~24VDC	24±10% VDC	24±20% VDC	24±5% VDC	24±20% VDC
Потребление тока	250mA	410mA	250mA	350mA	250mA	410mA	350mA	250mA	440mA	300mA
Размер панели (мм)	119x93	192x138	192x138	192x138	192x138	192x138	192x138	192x138	259x201	259x201
Вес (кг)	0.3	0.85	0.85	0.85	0.85	0.85	0.85	0.85	1.6	1.4

★ Новые модели MT6050i, MT6056i, MT6070iH, MT8070iH и MT6100i.

## 2009 Сравнительные характеристики

Модель	MT8080T	MT8104T	★ MT8100i	MT8104X	★ MT8104XH	MT8121T	★ MT8121X	★ MT8150X
Экран	8" TFT	10.4" TFT	10" TFT Widescreen	10.4" TFT	10.4" TFT	12.1" TFT	12.1" TFT	15" TFT
Разрешение	640x480	640x480	800x480	640x480	800x600	800x600	800x600	1024x768
Яркость (cd/m²)	400	400	300	400	400	400	400	350
Контраст	250:1	300:1	300:1	300:1	400:1	500:1	500:1	550:1
Подсветка	CCFL x 1	CCFL x 2	LED	CCFL x 2	LED	CCFL x 2	CCFL x 2	CCFL x 2
Время работы	50,000 hr	40,000 hr	30,000 hr	40,000 hr	30,000 hr	50,000 hr	50,000 hr	50,000 hr
Тип сенсорного экрана	4-wire Resistive	4-wire Resistive	4-wire Resistive	4-wire Resistive	4-wire Resistive	4-wire Resistive	4-wire Resistive	4-wire Resistive
Объём памяти (МБ)	32	32	128	256	256	32	256	256
Объём ОЗУ (МБ)	64	64	64	256	256	64	256	256
Процессор	32bit RISC 200MHz	32bit RISC 200MHz	32bit RISC 400MHz	CISC 500MHz	CISC 500MHz	RISC 200MHz	CISC 500MHz	CISC 500MHz
Карта CompactFlash	Yes	Yes	N/A	N/A	N/A	Yes	N/A	N/A
Карта SecureDigital	N/A	N/A	Yes	Yes	Yes	N/A	Yes	Yes
USB Хост	USB 2.0 x 3	USB 2.0 x 3	USB 1.1 x 1	USB 2.0 x 2	USB 2.0 x 2	USB 2.0 x 3	USB 2.0 x 2	USB 2.0 x 2
USB Клиент	N/A	N/A	USB 2.0 x 1	N/A	N/A	N/A	N/A	N/A
Сеть Ethernet	10/100 Base-T	10/100 Base-T	10/100 Base-T	10/100 Base-T	10/100 Base-T	10/100 Base-T	10/100 Base-T	10/100 Base-T
Порт PS/2	N/A	N/A	N/A	N/A	N/A	N/A	N/A	N/A
Слот mini-PCI	N/A	N/A	N/A	Option	N/A	N/A	N/A	N/A
Выход VGA	N/A	N/A	N/A	N/A	N/A	N/A	Option	Option
COM порт	COM1 (RS232 / RS485 2W/4W), COM2 (RS232), COM3 (RS232 / RS485 2W)	COM1 (RS232 / RS485 2W/4W), COM2 (RS232), COM3 (RS232 / RS485 2W)	COM1 (RS232 / RS485 2W/4W), COM2 (RS232), COM3 (RS232 / RS485 2W)	COM1 (RS232 / RS485 2W/4W), COM2 (RS232), COM3 (RS232 / RS485 2W)	COM1 (RS232 / RS485 2W/4W), COM2 (RS232), COM3 (RS232 / RS485 2W)	COM1 (RS232 / RS485 2W/4W), COM2 (RS232), COM3 (RS232 / RS485 2W)	COM1 (RS232 / RS485 2W/4W), COM2 (RS232), COM3 (RS232 / RS485 2W)	COM1 (RS232 / RS485 2W/4W), COM2 (RS232), COM3 (RS232 / RS485 2W)
Звуковой выход	N/A	N/A	Option	Line Out x 1 / MIC In x 1	Line Out x 1 / MIC In x 1	N/A	Line Out x 1 / MIC In x 1	Line Out x 1 / MIC In x 1
RTC	Yes	Yes	Yes	Yes	Yes	Yes	Yes	Yes
Входное напряжение	24±5% VDC	24±5% VDC	24±20% VDC	24±20% VDC	24±20% VDC	24±5% VDC	24±20% VDC	24±20% VDC
Потребление тока	440mA	440mA	300mA	1.25A	1.25A	500mA	1.25A	1.6A
Размер панели (мм)	223x168	259x201	259x201	259x201	259x201	305x231	305x231	352x279
Вес (кг)	1.3	1.6	1.4	1.6	1.6	2.1	2.1	2.9

★ Новые модели MT8100i, MT8104XH, MT8121X и MT8150X.